

LEA Name : Morrisville Borough SD
Address : 550 W Palmer St
Morrisville , PA 19067

County : Bucks
AUN Number : 122097203
LEA Type : SD

Annual Financial Report
Accuracy Certification Statement

For Fiscal Year Ending
6/30/2018

Pennsylvania Department of Education

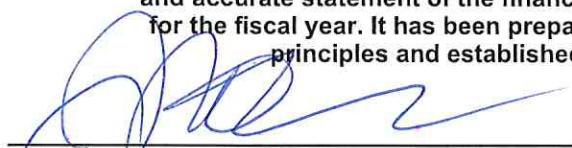
&

Office of Comptroller Operations

PDE-2056: Intermediate Unit

PDE-2057: School District, AVTS/CTC, Charter School,
and Special Program Jointure

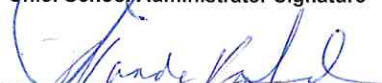
CERTIFICATION: By signing this page I agree that the electronic data submitted is a complete and accurate statement of the financial operations and status of the local education agency for the fiscal year. It has been prepared in accordance with generally accepted accounting principles and established Commonwealth of PA reporting guidelines.



Chief School Administrator Signature

Date

11/28/2018



Board Secretary Signature

Date

11-28-2018

ROBERT BRUCHAK

(215)736-5932

Ext :

Contact Person

Contact Person Telephone Number

RBRUCHAK@MV.ORG

Contact Person E-mail Address

Contact Person Fax Number

Audit Certification
Annual Financial Report:
For Fiscal Year Ending **6/30/2018**
(Pursuant to PA School Code Section 218(b))

LEA Name : Morrisville Borough SD
AUN Number : 122097203
County : Bucks

Audit Certification Due: 12/31/2018

This certification is applicable to the Annual Financial Report data submitted
through the Consolidated Financial Reporting System on: 11/28/2018
Date

Auditing Firm:

BBD, LLP
1835 MARKET STREET

PHILADELPHIA , PA , 19103-

Auditor Contact Name: CARL HOGAN

Auditor Phone: (215)567-7770

Auditor E-mail: CHOGAN@BBDCPA.COM

CERTIFICATION: By signing this page I agree that the financial statements of the school have been properly audited as noted above pursuant to Article XXIV, and in the auditor's professional opinion, the Annual Financial Report (PDE-2057) submitted on the date referenced is materially consistent with the audited financial statements.

Chief School Administrator


Signature

12/19/2018
Date

Board Secretary


Signature

12/19/2018
Date

ROBERT BRUCHAK

Contact Person

RBRUCHAK@MV.ORG

Contact Person E-mail Address

(215)736-5932

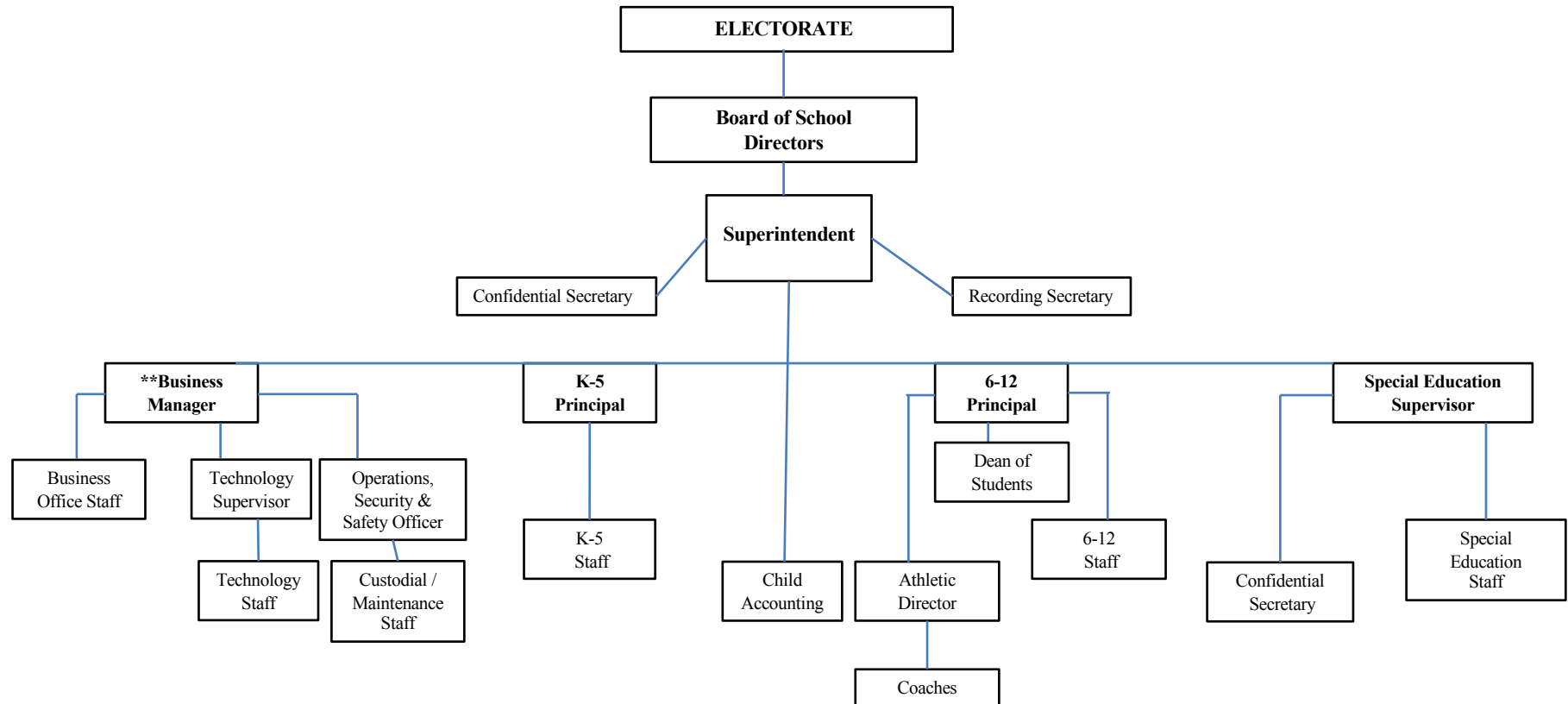
Ext :

Contact Person Telephone Number

215-736-5370

Contact Person Fax Number

MORRISVILLE BOROUGH SCHOOL DISTRICT



<u>Val Number</u>	<u>Description</u>	<u>Justification</u>
41140	Expenditure Detail - There is an entry in function 5150- 990 object "Other". Please explain what constitutes "Other". Expenditure 5150-990, Fund 39: \$44,773.00	Bond Discount from the GOB Series of 2017
42420	Expenditure Detail: Total current year 2700-513 expenditure varies from prior year by 10%. Correct the data or enter a justification. 2700-513, AFR Exp Detail: \$49,219.00 2700-513, PY AFR Amount: \$91,299.00	DECREASE IN TRANSPORTATION SERVICES AND COST IN CURRENT YEAR.
50410	SESS - 2140 Psychological Services: SESS Schedule amounts for Special Education vary from prior year by 40% or more. Correct the data or enter a justification. SESS Schedule 2140: \$24,617.00 Prior Year SESS Schedule 2140: \$15,816.00	INCREASE IN THE COST OF SALARIES, BENEFITS AND PROFESSIONAL SERVICES RELATED TO PSYCHOLOGICAL SERVICES.
50440	SESS - 2260 Instruction and Curriculum Development Services: SESS Schedule amounts for Special Education vary from prior year by 40% or more. Correct the data or enter a justification. SESS Schedule 2260: \$5,386.00 Prior Year SESS Schedule 2260: \$0.00	THERE WAS NO REPORTING FOR 2260 FUNCTION CODE IN THE PRIOR YEAR AFR.
50460	SESS - 2420 Medical Services: SESS Schedule amounts for Special Education vary from prior year by 40% or more. Correct the data or enter a justification. SESS Schedule 2420: \$1,067.00 Prior Year SESS Schedule 2420: \$128.00	INCREASE IN THE COST OF MEDICAL PROFESSIONAL AND TECHNICAL SERVICES IN THE CURRENT YEAR.

LEA : 122097203 Morrisville Borough SD

Printed 1/14/2019 10:41:20 AM

Amounts Expressed in Whole Dollars		<u>General Fund</u> <u>(10)</u>	<u>Public Purpose Trust</u> <u>(27)</u>	<u>Other Compt Approved</u> <u>(28)</u>	<u>Athletic / Activity</u> <u>(29)</u>	<u>Capital Reserve (690.</u> <u>1850)</u> <u>(31)</u>
Assets And Deferred Outflows Of Resources						
Assets						
0100	Cash and Cash Equivalents	1,708,287				
0110	Investments					
0120	Taxes Receivable	618,246				
0130	Due From Other Funds					
0141	Due From Other Governments	597,576				
0142	State Revenue Receivable					
0143	Federal Revenue Receivable					
0145	Other Intergovernmental Revenue Receivable					
0146	Due from Primary Government					
0147	Due from Component Unit					
0150	Other Receivables	8,952				
0170	Inventories					
0180	Prepaid Expenses (Expenditures)					
0190	Other Current Assets					
Total Assets		\$2,933,061				
0910	Deferred Outflows of Resources					
Total Assets And Deferred Outflows Of Resources		\$2,933,061				

LEA : 122097203 Morrisville Borough SD

Printed 1/14/2019 10:41:20 AM

Amounts Expressed in Whole Dollars		<u>Capital Reserve (1431</u> <u>(32)</u>	<u>Other Capital Projects</u> <u>Fund</u> <u>(39)</u>	<u>Debt Service</u> <u>(40)</u>	<u>Permanent</u> <u>(90)</u>	<u>Total Governmental</u> <u>Funds</u>
Assets And Deferred Outflows Of Resources						
Assets						
0100	Cash and Cash Equivalents	194,747	6,298,517			8,201,551
0110	Investments					
0120	Taxes Receivable					618,246
0130	Due From Other Funds					
0141	Due From Other Governments					597,576
0142	State Revenue Receivable					
0143	Federal Revenue Receivable					
0145	Other Intergovernmental Revenue Receivable					
0146	Due from Primary Government					
0147	Due from Component Unit					
0150	Other Receivables					8,952
0170	Inventories					
0180	Prepaid Expenses (Expenditures)					
0190	Other Current Assets					
Total Assets		\$194,747	\$6,298,517			\$9,426,325
0910	Deferred Outflows of Resources					
Total Assets And Deferred Outflows Of Resources		\$194,747	\$6,298,517			\$9,426,325

LEA : 122097203 Morrisville Borough SD

Printed 1/14/2019 10:41:20 AM

Amounts Expressed in Whole Dollars	<u>General Fund</u> <u>(10)</u>	<u>Public Purpose Trust</u> <u>(27)</u>	<u>Other Compt Approved</u> <u>(28)</u>	<u>Athletic / Activity</u> <u>(29)</u>	<u>Capital Reserve (690.</u> <u>1850)</u> <u>(31)</u>
Liabilities And Deferred Inflows Of Resources And Fund Balances					
Liabilities					
0400 Due to Other Funds					
0411 Due to Other Governments					
0412 Due to Primary Government					
0413 Due to Component Unit					
0420 Accounts Payable	335,484				
0430 Contracts Payable					
0440 Current Portion of Long-Term Debt					
0450 Short-Term Payables					
0461 Accrued Salaries and Benefits	1,263,002				
0462 Payroll Deductions and Withholding					
0480 Unearned Revenues					
0490 Other Current Liabilities	14,156				
Total Liabilities	\$1,612,642				
0950 Deferred Inflows of Resources	510,166				
Fund Balances					
0810 Nonspendable Fund Balance					
0820 Restricted Fund Balance					
0830 Committed Fund Balance	707,253				
0840 Assigned Fund Balance					
0850 Unassigned Fund Balance	103,000				
Total Fund Balances	\$810,253				
Total Liabilities, Deferred Inflows Of Resources And Fund Balances	\$2,933,061				

LEA : 122097203 Morrisville Borough SD

Printed 1/14/2019 10:41:20 AM

Amounts Expressed in Whole Dollars		<u>Capital Reserve (1431)</u> <u>(32)</u>	<u>Other Capital Projects</u> <u>Fund</u> <u>(39)</u>	<u>Debt Service</u> <u>(40)</u>	<u>Permanent</u> <u>(90)</u>	<u>Total Governmental</u> <u>Funds</u>
Liabilities And Deferred Inflows Of Resources And Fund Balances						
Liabilities						
0400	Due to Other Funds					
0411	Due to Other Governments					
0412	Due to Primary Government					
0413	Due to Component Unit					
0420	Accounts Payable	5,538				341,022
0430	Contracts Payable					
0440	Current Portion of Long-Term Debt					
0450	Short-Term Payables					
0461	Accrued Salaries and Benefits					1,263,002
0462	Payroll Deductions and Withholding					
0480	Unearned Revenues					
0490	Other Current Liabilities					14,156
Total Liabilities		\$5,538				\$1,618,180
0950	Deferred Inflows of Resources					510,166
Fund Balances						
0810	Nonspendable Fund Balance					
0820	Restricted Fund Balance	189,209	6,298,517			6,487,726
0830	Committed Fund Balance					707,253
0840	Assigned Fund Balance					
0850	Unassigned Fund Balance					103,000
Total Fund Balances		\$189,209	\$6,298,517			\$7,297,979
Total Liabilities, Deferred Inflows Of Resources And Fund Balances		\$194,747	\$6,298,517			\$9,426,325

LEA : 122097203 Morrisville Borough SD

Printed 1/14/2019 10:41:22 AM

Amounts Expressed in Whole Dollars	General Fund (10)	Public Purpose Trust (27)	Other Compt Approved (28)	Athletic / Activity (29)	Capital Reserve (690. 1850) (31)
Revenues					
6000 Revenue from Local Sources	12,351,090				
7000 Revenue from State Sources	7,547,633				
8000 Revenue from Federal Sources	743,947				
Total Revenues	\$20,642,670				
Expenditures					
1000 Instruction	15,628,304				
2000 Support Services	5,282,363				
3000 Operation of Non-Instructional Services	590,327				
4000 Facilities Acquisition, Construction and Improvement Services					
5110 Debt Service	867,001				
5130 Refund of Prior Year Revenues / Receipts	4,110				
Total Expenditures	\$22,372,105				
Excess (Deficiency) Of Revenues Over Expenditures	(\$1,729,435)				
Other Financing Sources (Uses)					
9110 Face Value of Bonds Issued					
9120 Proceeds from Refunding of Bonds					
9130 Bond Premiums					
9200 Proceeds from Extended-Term Financing					
9300 Interfund Transfers - IN					
9400 Sale of or Compensation for Loss of Fixed Assets	235,000				
9710 Transfers from Component Units					
9720 Transfers from Primary Governments					
9910 Other Financing Sources Not Listed in the 9000 Series					
9990 Insurance Recoveries					
5120 Debt Service – Refunded Bonds					
5150 Bond Discounts					
5200 Interfund Transfers – Out	261,455				
5300 Transfers Out to Component Units/Primary Governments					
Total Other Financing Sources (Uses)	(\$26,455)				

LEA : 122097203 Morrisville Borough SD

Printed 1/14/2019 10:41:22 AM

Amounts Expressed in Whole Dollars	Capital Reserve (1431) (32)	Other Capital Projects Fund (39)	Debt Service (40)	Permanent (90)	Total Governmental Funds
Revenues					
6000 Revenue from Local Sources	4,670	53,288			12,409,048
7000 Revenue from State Sources					7,547,633
8000 Revenue from Federal Sources					743,947
Total Revenues	\$4,670	\$53,288			\$20,700,628
Expenditures					
1000 Instruction					15,628,304
2000 Support Services	464,229	321,246			6,067,838
3000 Operation of Non-Instructional Services					590,327
4000 Facilities Acquisition, Construction and Improvement Services	170,068	513,752			683,820
5110 Debt Service					867,001
5130 Refund of Prior Year Revenues / Receipts					4,110
Total Expenditures	\$634,297	\$834,998			\$23,841,400
Excess (Deficiency) Of Revenues Over Expenditures	(\$629,627)	(\$781,710)			(\$3,140,772)
Other Financing Sources (Uses)					
9110 Face Value of Bonds Issued		7,125,000			7,125,000
9120 Proceeds from Refunding of Bonds					
9130 Bond Premiums					
9200 Proceeds from Extended-Term Financing					
9300 Interfund Transfers - IN	235,000				235,000
9400 Sale of or Compensation for Loss of Fixed Assets					235,000
9710 Transfers from Component Units					
9720 Transfers from Primary Governments					
9910 Other Financing Sources Not Listed in the 9000 Series					
9990 Insurance Recoveries					
5120 Debt Service – Refunded Bonds					
5150 Bond Discounts		44,773			44,773
5200 Interfund Transfers – Out					261,455
5300 Transfers Out to Component Units/Primary Governments					
Total Other Financing Sources (Uses)	\$235,000	\$7,080,227			\$7,288,772

Amounts Expressed in Whole Dollars		<u>General Fund</u> <u>(10)</u>	<u>Public Purpose Trust</u> <u>(27)</u>	<u>Other Compt Approved</u> <u>(28)</u>	<u>Athletic / Activity</u> <u>(29)</u>	<u>Capital Reserve</u> <u>(690.</u> <u>1850)</u> <u>(31)</u>
Special And Extraordinary Items						
9920	Special Items – Gains					
9930	Extraordinary Items – Gains					
5520	Special Items – Losses					
5530	Extraordinary Items – Losses					
Net Change In Fund Balances		(\$1,755,890)				
Fund Balance						
0001	Fund Balance - Beginning of Fiscal Year	2,566,142				
Fund Balance - End Of Year		\$810,252				

Amounts Expressed in Whole Dollars	<u>Capital Reserve (1431</u> <u>(32)</u>	<u>Other Capital Projects</u> <u>Fund</u> <u>(39)</u>	<u>Debt Service</u> <u>(40)</u>	<u>Permanent</u> <u>(90)</u>	<u>Total Governmental</u> <u>Funds</u>
Special And Extraordinary Items					
9920 Special Items – Gains					
9930 Extraordinary Items – Gains					
5520 Special Items – Losses					
5530 Extraordinary Items – Losses					
Net Change In Fund Balances	(\$394,627)	\$6,298,517			\$4,148,000
Fund Balance					
0001 Fund Balance - Beginning of Fiscal Year	583,836				3,149,978
Fund Balance - End Of Year	\$189,209	\$6,298,517			\$7,297,978

Amounts Expressed in Whole Dollars	<u>Food Service</u> (51)	<u>Child Care</u> <u>Operations</u> (52)	<u>Other Enterprise</u> (58)	<u>TOTAL</u>	<u>Internal Service</u> (60)
Assets And Deferred Outflows Of Resources					
Current Assets					
0100 Cash and Cash Equivalents	24,400			24,400	
0110 Investments					
0130 Due From Other Funds					
0141 Due From Other Governments	57,333			57,333	
0142 State Revenue Receivable					
0143 Federal Revenue Receivable					
0146 Due from Primary Government					
0147 Due from Component Unit					
0150 Other Receivables					
0170 Inventories	5,009			5,009	
0180 Prepaid Expenses (Expenditures)					230,141
0190 Other Current Assets					
Total Current Assets	\$86,742			\$86,742	\$230,141
Noncurrent Assets					
0211 Land					
0212 Site Improvements (Net)					
0220 Buildings and Building Improvements (Net)					
0230 Machinery, Equipment and Furniture (Net)	10,065			10,065	
0250 Construction in Progress					
0260 Long Term Prepayments					
0290 Other Noncurrent Assets					
Total Noncurrent Assets	\$10,065			\$10,065	
0910 Deferred Outflows of Resources					
Total Assets And Deferred Outflows Of Resources	\$96,807			\$96,807	\$230,141

Amounts Expressed in Whole Dollars	<u>Food Service</u> <u>(51)</u>	<u>Child Care</u> <u>Operations</u> <u>(52)</u>	<u>Other Enterprise</u> <u>(58)</u>	<u>TOTAL</u>	<u>Internal Service</u> <u>(60)</u>
Liabilities And Deferred Inflows Of Resources And Net Position					
Current Liabilities					
0400 Due to Other Funds					
0411 Due to Other Governments					
0413 Due to Component Unit					
0420 Accounts Payable	72,443			72,443	
0430 Contracts Payable					
0440 Current Portion of Long-Term Debt					
0450 Short-Term Payables					
0461 Accrued Salaries and Benefits					
0462 Payroll Deductions and Withholding					
0480 Unearned Revenues					
0490 Other Current Liabilities					
Total Current Liabilities	\$72,443			\$72,443	
Noncurrent Liabilities					
0510 Bonds Payable					
0520 Extended-Term Financing Agreements Payable					
0530 Lease-Purchase Obligations					
0540 Accumulated Compensated Absences					
0550 Authority Lease Obligations					
0560 Other Post-Employment Benefits (OPEB)					
0570 Net Pension Liability					
0599 Other Noncurrent Liabilities					
Total Noncurrent Liabilities					
Total Liabilities	\$72,443			\$72,443	
0950 Deferred Inflows of Resources					
Net Position					
0791 Net Investment in Capital Assets	10,065			10,065	
0008 Restricted Net Position (0792 – 0798)					
0799 Unrestricted Net Position	14,299			14,299	230,141
Total Net Position	\$24,364			\$24,364	\$230,141
Total Liabilities And Deferred Inflows Of Resources And Net Position	\$96,807			\$96,807	\$230,141

Amounts Expressed in Whole Dollars	Food Service (51)	Child Care Operations (52)	Other Enterprise (58)	TOTAL	Internal Service (60)
Operating Revenues					
6600 Food Service Revenue	105,601			105,601	
0071 Charges for Services					1,217,410
0072 Other Operating Revenue					
Total Operating Revenues	\$105,601			\$105,601	\$1,217,410
Operating Expenses					
100 Personnel Services – Salaries	182,981			182,981	
200 Personnel Services – Employee Benefits	57,828			57,828	1,001,832
300 Purchased Professional and Technical Services					
400 Purchased Property Services					
500 Other Purchased Services	36,684			36,684	
600 Supplies	202,046			202,046	
740 Depreciation	2,341			2,341	
810 Dues and Fees	302			302	
890 Miscellaneous Expenditures					
Total Operating Expenses	\$482,182			\$482,182	\$1,001,832
Operating Income (Loss)	(\$376,581)			(\$376,581)	\$215,578
Non Operating Revenues (Expenses)					
6500 Earnings on Investments					
6920 Contributions and Donations from Private Sources					
6930 Gains or Losses on Sale of Fixed Assets					
6991 Refunds of a Prior Year Expenditure					
7000 Revenue from State Sources	15,046			15,046	
8000 Revenue from Federal Sources	342,718			342,718	
820 Claims and Judgments Against the LEA					
830 Interest					
TOTAL Non Operating Revenues (Expenses)	\$357,764			\$357,764	
Income (Loss) Before Contributions And Transfers	(\$18,817)			(\$18,817)	\$215,578

Amounts Expressed in Whole Dollars	<u>Food Service</u> <u>(51)</u>	<u>Child Care Operations</u> <u>(52)</u>	<u>Other Enterprise</u> <u>(58)</u>	<u>TOTAL</u>	<u>Internal Service</u> <u>(60)</u>
Contributions, Transfers, and Special and Extraordinary Items					
5200 Interfund Transfers – Out					
5300 Transfers Out to Component Units/Primary Governments					
5520 Special Items – Losses					
5530 Extraordinary Items – Losses					
9300 Interfund Transfers - IN	26,455			26,455	
9500 Capital Contributions					
9700 Transfers IN From Component Units/Primary Governments					
9920 Special Items – Gains					
9930 Extraordinary Items – Gains					
Change In Net Position	\$7,638			\$7,638	\$215,578
0002 Net Position - Beginning of Fiscal Year	16,726			16,726	14,563
0003 Accounting Changes / Residual Equity Transfers					
Net Position - End Of Year	\$24,364			\$24,364	\$230,141

LEA : 122097203 Morrisville Borough SD

Printed 1/14/2019 10:41:26 AM

Amounts Expressed in Whole Dollars	<u>Food Service</u> <u>(51)</u>	<u>Child Care Operations</u> <u>(52)</u>	<u>Other Enterprise</u> <u>(58)</u>	<u>TOTAL</u>	<u>Internal Service(60)</u>
Cash Flows From Operating Activities					
0011 Cash Receipts From Users	105,601			105,601	
0012 Cash Receipts From Assessments Made to Other Funds					1,217,410
0013 Cash Receipts From Earnings on Investments					
0014 Cash Receipts From Other Operating Revenue					
0015 Cash Payments To Employees For Services					
0016 Cash Payments For Insurance Claims					1,217,410
0017 Cash Payments To Suppliers For Goods and Services					
0018 Cash Payments For Other Operating Expenses	461,592			461,592	
Net Cash Provided By (Used For) Operating Activities	(\$355,991)			(\$355,991)	\$0
Cash Flows From Non-Capital Financing Activities					
0021 Receipts From Local Sources - 6000					
0022 Receipts From State Sources - 7000	14,459			14,459	
0023 Receipts From Federal Sources -8000	316,128			316,128	
0024 Notes and Loans Received (Repaid)					
0025 Interest Paid on Notes/Loans - 5100-830					
0026 Operating Transfers In (Out)/Residual Equity Trans	26,455			26,455	
0027 Operating Transfers In (Out) Primary Government / Comp Unit					
0028 Receipts From Refund of Prior Year Expenditures - 6991					
0029 Special and Extraordinary Gains (losses)					
0030 Receipts from Insurance Recoveries -9990					
Net Cash Prov By (Used for) Non-Capital Financing Activities	\$357,042			\$357,042	
Cash Flows From Capital and Related Financing Activities					
0031 Payments For Fac Acq, Const, and Imp - 4000					
0032 Gain / (Loss) on Sale of Fixed Assets - 6930					
0033 Proceeds From Extended Term Financing - 9200					
0034 Principal Paid on Financing Agreements					
0035 Interest Paid on Financing Agreements - 5100-830					
0036 (Inc) Dec in Contributed Capital					
Net Cash Prov By (Used for) Capital and Related Financing Activities					
Cash Flows From Investing Activities					
0041 Earnings on Investments - 6500					
0042 Purchase of Inv Securities / Deposits to Inv Pools					
0043 Receipts From Investment Pool Withdrawals					
0044 Proceeds from Sale and Maturity of Inv Securities					

LEA : 122097203 Morrisville Borough SD

Printed 1/14/2019 10:41:26 AM

0045 Loans Received (Paid)

Net Cash Prov By (Used for) Investing Activities

LEA : 122097203 Morrisville Borough SD

Printed 1/14/2019 10:41:26 AM

	Food Service (51)	Child Care Operations (52)	Other Enterprise (58)	TOTAL	Internal Service (60)
Net Increase (Decrease) in Cash Flows	1,051			1,051	
0004 Cash and Cash Equivalents Beginning of Year	23,349			23,349	
Cash and Cash Equivalents at Year End	\$24,400			\$24,400	
Reconciliation of Operating Income (Loss) To Net Cash Provided by (Used For) Operating Activities					
0005 Operating Income (Loss) per REP	(376,581)			(376,581)	215,578
Adjustments					
0051 Depreciation and Net Amortization	2,341			2,341	
0052 Provision for Uncollectible Accounts					
0053 Other Adjustments	18,848			18,848	
Effect of Changes in Assets, Liabilities, Deferred Outflows and Deferred Inflows					
0054 (Inc) Dec In Accounts Receivable (0120-0150)					
0055 Advances to Other Funds (0160)					
0056 (Inc) Dec in Inventories (0170)					
0057 (Inc) Dec in Prepaid Expenses (0180)					(146,667)
0058 (Inc) Dec in Other Current or Noncurrent Assets					
0064 Deferred Outflows (0910)					
0059 Inc (Dec) in Accounts Payable (0400-0450)	(599)			(599)	
0060 Inc (Dec) in Accrued Salaries/Benefits (0461)					
0065 Inc (Dec) in Net Pension Liabilities (0570)					
0066 Inc (Dec) in Other Postemp Benefit Oblig (0560)					
0061 Inc (Dec) in Payroll Deductions/Withholding (0462)					
0062 Inc (Dec) in Unearned Revenue (0480)					
0063 Inc (Dec) in Other Current or Noncurrent Liabilities					(68,911)
0067 Deferred Inflows (0950)					
Total Adjustments	\$20,590			\$20,590	(\$215,578)
Cash Provided By (Used for) Total	(\$355,991)			(\$355,991)	

COMBINED STATEMENT OF CASH FLOWS
SCHEDULE OF NONCASH INVESTING, CAPITAL, AND FINANCING ACTIVITIES

Explanation of Transaction and Balance Sheet Effect	Amount
USDA DONATED COMMODITY VALUE	18,848
Total	\$18,848

LEA : 122097203 Morrisville Borough SD

Printed 1/14/2019 10:41:27 AM

Amounts Expressed in Whole Dollars	<u>Private Purpose Trust</u> <u>(71)</u>	<u>Investment Trust</u> <u>(72)</u>	<u>Pension Trust</u> <u>(73)</u>	<u>Activity</u> <u>(81)</u>
Assets And Deferred Outflows Of Resources				
Assets				
0100 Cash and Cash Equivalents	25,445			39,781
0110 Investments				
0130 Due From Other Funds				
0147 Due from Component Unit				
0150 Other Receivables				
0170 Inventories				
0180 Prepaid Expenses (Expenditures)				
0190 Other Current Assets				
0220 Buildings and Building Improvements (Net)				
0230 Machinery, Equipment and Furniture (Net)				
Total Assets	\$25,445			\$39,781
0910 Deferred Outflows of Resources				
Total Assets And Deferred Outflows Of Resources	\$25,445			\$39,781

LEA : 122097203 Morrisville Borough SD

Printed 1/14/2019 10:41:27 AM

Amounts Expressed in Whole Dollars		<u>Other Agency</u> <u>(89)</u>	<u>Discrete Component Units</u> <u>(98)</u>	<u>Discrete Component Units</u> <u>(99)</u>	<u>Total Fiduciary Funds</u>
Assets And Deferred Outflows Of Resources					
Assets					
0100	Cash and Cash Equivalents				65,226
0110	Investments				
0130	Due From Other Funds				
0147	Due from Component Unit				
0150	Other Receivables				
0170	Inventories				
0180	Prepaid Expenses (Expenditures)				
0190	Other Current Assets				
0220	Buildings and Building Improvements (Net)				
0230	Machinery, Equipment and Furniture (Net)				
Total Assets					\$65,226
0910	Deferred Outflows of Resources				
Total Assets And Deferred Outflows Of Resources					\$65,226

LEA : 122097203 Morrisville Borough SD

Printed 1/14/2019 10:41:27 AM

Amounts Expressed in Whole Dollars	<u>Private Purpose Trust</u> (71)	<u>Investment Trust</u> (72)	<u>Pension Trust</u> (73)	<u>Activity</u> (81)
Liabilities, Deferred Inflows Of Resources And Net Position				
Liabilities				
0400 Due to Other Funds				
0411 Due to Other Governments				
0412 Due to Primary Government				
0413 Due to Component Unit				
0420 Accounts Payable				
0430 Contracts Payable				
0450 Short-Term Payables				
0461 Accrued Salaries and Benefits				
0462 Payroll Deductions and Withholding				
0480 Unearned Revenues				
0490 Other Current Liabilities				39,781
Total Liabilities				\$39,781
0950 Deferred Inflows of Resources				
Net Position				
0791 Net Investment in Capital Assets				
0009 Restricted Net Position (0792 – 0798)	25,445			
0799 Unrestricted Net Position				
Total Net Position	\$25,445			
Total Liabilities, Deferred Inflows Of Resources And Net Position	\$25,445			\$39,781

LEA : 122097203 Morrisville Borough SD

Printed 1/14/2019 10:41:27 AM

Amounts Expressed in Whole Dollars		<u>Other Agency</u>	<u>Discrete Component Units</u>	<u>Discrete Component Units</u>	<u>Total Fiduciary Funds</u>
		(89)	(98)	(99)	
Liabilities, Deferred Inflows Of Resources And Net Position					
Liabilities					
0400	Due to Other Funds				
0411	Due to Other Governments				
0412	Due to Primary Government				
0413	Due to Component Unit				
0420	Accounts Payable				
0430	Contracts Payable				
0450	Short-Term Payables				
0461	Accrued Salaries and Benefits				
0462	Payroll Deductions and Withholding				
0480	Unearned Revenues				
0490	Other Current Liabilities				39,781
Total Liabilities					\$39,781
0950	Deferred Inflows of Resources				
Net Position					
0791	Net Investment in Capital Assets				
0009	Restricted Net Position (0792 – 0798)				25,445
0799	Unrestricted Net Position				
Total Net Position					\$25,445
Total Liabilities, Deferred Inflows Of Resources And Net Position					\$65,226

LEA : 122097203 Morrisville Borough SD

Printed 1/14/2019 10:41:28 AM

Amounts Expressed in Whole Dollars	<u>Private Purpose Trust</u> <u>(71)</u>	<u>Investment Trust</u> <u>(72)</u>	<u>Pension Trust</u> <u>(73)</u>	<u>Discrete Component</u> <u>Units</u> <u>(98)</u>	<u>Discrete Component</u> <u>Units</u> <u>(99)</u>	<u>Total Fiduciary</u> <u>Funds</u>
Additions						
0091 Gifts and Contributions	2,534					2,534
0092 Other Additions						
Deductions						
0093 Scholarships Awarded	3,188					3,188
0094 Other Deductions						
Change In Net Position	(\$654)					(\$654)
0006 Net Position – Beginning of Fiscal Year	26,099					26,099
0007 Net Position Held in Trust for Pension Benefits						
Net Position - End of Fiscal Year	\$25,445					\$25,445

	Revenue Reported In Current Year	Current Year Tax Accrual	Prior Year Tax Accrual	Taxes Collected In Current Year
Revenue from Local Sources				
6111 Current Real Estate Taxes	11,440,847.00			11,440,847.00
6113 Public Utility Realty Taxes	12,946.00			12,946.00
6153 Current Act 511 Real Estate Transfer Taxes	170,720.00	12,805.00	20,385.00	178,300.00
6411 Delinquent Real Estate Taxes	399,397.00	95,275.00	67,268.00	371,390.00
6500 Earnings on Investments	74,581.00			
6700 Revenues from LEA Activities	3,138.00			
6832 Federal IDEA Revenue Received as Pass Through	205,108.00			
6910 Rentals	1,000.00			
6999 Other Revenues Not Specified Above	43,353.00			
TOTAL Revenue from Local Sources	\$12,351,090.00	\$108,080.00	\$87,653.00	\$12,003,483.00

	Revenue Reported In Current Year			
Revenue from State Sources				
7110 Basic Education Funding	3,132,359.00			
7160 Tuition for Orphans Subsidy	14,481.00			
7271 Special Education funds for School-Aged Pupils	714,408.00			
7292 Pre-K Counts	472,500.00			
7311 Pupil Transportation Subsidy	46,904.00			
7320 Rental and Sinking Fund Payments / Building Reimbursement Subsidy	11,706.00			
7330 Health Services (Medical, Dental, Nurse, Act 25)	21,204.00			
7340 State Property Tax Reduction Allocation	386,668.00			
7505 Ready to Learn Block Grant	119,607.00			
7599 Other State Revenue Not Listed Elsewhere in the 7000 Series	1,000,000.00			
7810 State Share of Social Security and Medicare Taxes	292,510.00			
7820 State Share of Retirement Contributions	1,335,286.00			
TOTAL Revenue from State Sources	\$7,547,633.00			

	Revenue Reported In Current Year			
<u>Revenue from Federal Sources</u>				
8514 NCLB, Title I - Improving the Academic Achievement of the Disadvantaged	180,388.00			
8515 NCLB, Title II - Preparing, Training and Recruiting High Quality Teachers and Principals	37,640.00			
8517 NCLB, Title IV - 21St Century Schools	516,656.00			
8810 School-Based Access Medicaid Reimbursement Program (SBAP) Reimbursements (Access)	3,717.00			
8820 Medical Assistance Reimbursement for Administrative Claiming (Quarterly) Program	5,546.00			
TOTAL Revenue from Federal Sources	\$743,947.00			

	Revenue Reported In Current Year			
<u>Other Financing Sources</u>				
9400 Sale of or Compensation for Loss of Fixed Assets	235,000.00			
TOTAL Other Financing Sources	\$235,000.00			
TOTAL FROM ALL SOURCES	\$20,877,670.00	\$108,080.00	\$87,653.00	\$12,003,483.00

Revenue from Local Sources	12,351,090.00
Revenue from State Sources	7,547,633.00
Revenue from Federal Sources	743,947.00
Other Financing Sources	235,000.00
TOTAL FROM ALL SOURCES	\$20,877,670.00

LEA : 122097203 Morrisville Borough SD

Printed 1/14/2019 10:41:32 AM

General Fund (10)

1000 Instruction	Total
100 <u>Personnel Services – Salaries</u>	
100 Personnel Services – Salaries	5,989,293.00
Total Personnel Services – Salaries	\$5,989,293.00
200 <u>Personnel Services – Employee Benefits</u>	
220 Social Security Contributions	450,215.00
230 PSERS Retirement Contributions	1,920,263.00
250 Unemployment Compensation	11,819.00
260 Workers' Compensation	59,522.00
270 Group Insurance – Self-Insurance	1,278,205.00
299 All Other Employee Benefits	42,839.00
Total Personnel Services – Employee Benefits	\$3,762,863.00
300 <u>Purchased Professional and Technical Services</u>	
310 Official / Administrative Services	112,770.00
322 Professional Educational Services – Ius	2,173,920.00
329 Professional Educational Services – Other	76,577.00
330 Other Professional Services	181,393.00
340 Technical Services	19,644.00
Total Purchased Professional and Technical Services	\$2,564,304.00
400 <u>Purchased Property Services</u>	
420 Utility Services	132.00
440 Rentals	33,536.00
Total Purchased Property Services	\$33,668.00
500 <u>Other Purchased Services</u>	
530 Communications	6,000.00
561 Tuition To Other School Districts Within the State	882,969.00
562 Tuition To Pennsylvania Charter Schools	1,008,178.00
564 Tuition To Career and Technology Centers	743,006.00
567 Tuition To Approved Private Schools (APS) and PA Chartered Schools for the Deaf and Blind	345,461.00
568 Tuition To Private Residential Rehabilitative Institutions (PRRI) [In-State] and Detention Centers	9,379.00
580 Travel	11,417.00
599 Other Miscellaneous Purchased Services	6,164.00
Total Other Purchased Services	\$3,012,574.00
600 <u>Supplies</u>	
610 General Supplies	174,909.00
640 Books and Periodicals	67,648.00
Total Supplies	\$242,557.00
700 <u>Property</u>	
752 Capital Equipment – Original and Additional	15,222.00
Total Property	\$15,222.00
800 <u>Other Objects</u>	
890 Miscellaneous Expenditures	7,823.00

LEA : 122097203 Morrisville Borough SD

Printed 1/14/2019 10:41:32 AM

General Fund (10)

1000 Instruction		<u>Total</u>
Total Other Objects		\$7,823.00
Total 1000 Instruction		\$15,628,304.00

LEA : 122097203 Morrisville Borough SD

Printed 1/14/2019 10:41:32 AM

General Fund (10)				
1100 Regular Programs – Elementary / Secondary	<u>Elementary</u>	<u>Secondary</u>	<u>Federal</u>	<u>Total</u>
100 <u>Personnel Services – Salaries</u>				
100 Personnel Services – Salaries	1,596,045.00	2,034,377.00	509,432.00	4,139,854.00
Total Personnel Services – Salaries	\$1,596,045.00	\$2,034,377.00	\$509,432.00	\$4,139,854.00
200 <u>Personnel Services – Employee Benefits</u>				
220 Social Security Contributions	118,230.00	151,027.00	34,183.00	303,440.00
230 PSERS Retirement Contributions	535,706.00	673,427.00	60,013.00	1,269,146.00
250 Unemployment Compensation	11,819.00			11,819.00
260 Workers' Compensation	14,081.00	33,259.00		47,340.00
270 Group Insurance – Self-Insurance	386,310.00	357,938.00	59,222.00	803,470.00
299 All Other Employee Benefits	40,839.00	2,000.00		42,839.00
Total Personnel Services – Employee Benefits	\$1,106,985.00	\$1,217,651.00	\$153,418.00	\$2,478,054.00
300 <u>Purchased Professional and Technical Services</u>				
310 Official / Administrative Services	65,872.00	46,898.00		112,770.00
329 Professional Educational Services – Other		8,492.00	68,085.00	76,577.00
330 Other Professional Services			7,934.00	7,934.00
Total Purchased Professional and Technical Services	\$65,872.00	\$55,390.00	\$76,019.00	\$197,281.00
400 <u>Purchased Property Services</u>				
440 Rentals	16,497.00	15,939.00	1,100.00	33,536.00
Total Purchased Property Services	\$16,497.00	\$15,939.00	\$1,100.00	\$33,536.00
500 <u>Other Purchased Services</u>				
530 Communications		6,000.00		6,000.00
562 Tuition To Pennsylvania Charter Schools	240,414.00	345,515.00		585,929.00
580 Travel		7,192.00		7,192.00
599 Other Miscellaneous Purchased Services			6,164.00	6,164.00
Total Other Purchased Services	\$240,414.00	\$358,707.00	\$6,164.00	\$605,285.00
600 <u>Supplies</u>				
610 General Supplies	30,657.00	100,939.00	18,223.00	149,819.00
640 Books and Periodicals	63,206.00	2,191.00	184.00	65,581.00
Total Supplies	\$93,863.00	\$103,130.00	\$18,407.00	\$215,400.00
700 <u>Property</u>				
752 Capital Equipment – Original and Additional		241.00	14,981.00	15,222.00
Total Property		\$241.00	\$14,981.00	\$15,222.00
800 <u>Other Objects</u>				
890 Miscellaneous Expenditures			7,823.00	7,823.00
Total Other Objects			\$7,823.00	\$7,823.00
Total 1100 Regular Programs – Elementary / Secondary	\$3,119,676.00	\$3,785,435.00	\$787,344.00	\$7,692,455.00

LEA : 122097203 Morrisville Borough SD

Printed 1/14/2019 10:41:32 AM

General Fund (10)

1110 Regular Programs

	Elementary	Secondary	Federal	Total
100 <u>Personnel Services – Salaries</u>				
100 Personnel Services – Salaries	1,596,045.00	2,034,377.00		3,630,422.00
Total Personnel Services – Salaries	\$1,596,045.00	\$2,034,377.00		\$3,630,422.00
200 <u>Personnel Services – Employee Benefits</u>				
220 Social Security Contributions	118,230.00	151,027.00		269,257.00
230 PSERS Retirement Contributions	535,706.00	673,427.00		1,209,133.00
250 Unemployment Compensation	11,819.00			11,819.00
260 Workers' Compensation	14,081.00	33,259.00		47,340.00
270 Group Insurance – Self-Insurance	386,310.00	357,938.00		744,248.00
299 All Other Employee Benefits	40,839.00	2,000.00		42,839.00
Total Personnel Services – Employee Benefits	\$1,106,985.00	\$1,217,651.00		\$2,324,636.00
300 <u>Purchased Professional and Technical Services</u>				
310 Official / Administrative Services	65,872.00	46,898.00		112,770.00
329 Professional Educational Services – Other		8,492.00		8,492.00
Total Purchased Professional and Technical Services	\$65,872.00	\$55,390.00		\$121,262.00
400 <u>Purchased Property Services</u>				
440 Rentals	16,497.00	15,939.00		32,436.00
Total Purchased Property Services	\$16,497.00	\$15,939.00		\$32,436.00
500 <u>Other Purchased Services</u>				
530 Communications		6,000.00		6,000.00
562 Tuition To Pennsylvania Charter Schools	240,414.00	345,515.00		585,929.00
580 Travel		7,192.00		7,192.00
Total Other Purchased Services	\$240,414.00	\$358,707.00		\$599,121.00
600 <u>Supplies</u>				
610 General Supplies	30,657.00	100,939.00		131,596.00
640 Books and Periodicals	63,206.00	2,191.00		65,397.00
Total Supplies	\$93,863.00	\$103,130.00		\$196,993.00
700 <u>Property</u>				
752 Capital Equipment – Original and Additional		241.00		241.00
Total Property		\$241.00		\$241.00
Total 1110 Regular Programs	\$3,119,676.00	\$3,785,435.00		\$6,905,111.00

LEA : 122097203 Morrisville Borough SD

Printed 1/14/2019 10:41:32 AM

General Fund (10)				
1190 Federally-Funded Regular Programs	Elementary	Secondary	Federal	Total
100 <u>Personnel Services – Salaries</u>				
100 Personnel Services – Salaries			509,432.00	509,432.00
Total Personnel Services – Salaries			\$509,432.00	\$509,432.00
200 <u>Personnel Services – Employee Benefits</u>				
220 Social Security Contributions			34,183.00	34,183.00
230 PSERS Retirement Contributions			60,013.00	60,013.00
270 Group Insurance – Self-Insurance			59,222.00	59,222.00
Total Personnel Services – Employee Benefits			\$153,418.00	\$153,418.00
300 <u>Purchased Professional and Technical Services</u>				
329 Professional Educational Services – Other			68,085.00	68,085.00
330 Other Professional Services			7,934.00	7,934.00
Total Purchased Professional and Technical Services			\$76,019.00	\$76,019.00
400 <u>Purchased Property Services</u>				
440 Rentals			1,100.00	1,100.00
Total Purchased Property Services			\$1,100.00	\$1,100.00
500 <u>Other Purchased Services</u>				
599 Other Miscellaneous Purchased Services			6,164.00	6,164.00
Total Other Purchased Services			\$6,164.00	\$6,164.00
600 <u>Supplies</u>				
610 General Supplies			18,223.00	18,223.00
640 Books and Periodicals			184.00	184.00
Total Supplies			\$18,407.00	\$18,407.00
700 <u>Property</u>				
752 Capital Equipment – Original and Additional			14,981.00	14,981.00
Total Property			\$14,981.00	\$14,981.00
800 <u>Other Objects</u>				
890 Miscellaneous Expenditures			7,823.00	7,823.00
Total Other Objects			\$7,823.00	\$7,823.00
Total 1190 Federally-Funded Regular Programs			\$787,344.00	\$787,344.00

LEA : 122097203 Morrisville Borough SD

Printed 1/14/2019 10:41:32 AM

General Fund (10)

1200 Special Programs – Elementary / Secondary	Elementary	Secondary	Federal	Total
100 Personnel Services – Salaries				
100 Personnel Services – Salaries	736,163.00	927,356.00		1,663,519.00
Total Personnel Services – Salaries	\$736,163.00	\$927,356.00		\$1,663,519.00
200 Personnel Services – Employee Benefits				
220 Social Security Contributions	63,992.00	69,317.00		133,309.00
230 PSERS Retirement Contributions	281,345.00	310,864.00		592,209.00
260 Workers’ Compensation		10,455.00		10,455.00
270 Group Insurance – Self-Insurance	210,140.00	214,316.00		424,456.00
Total Personnel Services – Employee Benefits	\$555,477.00	\$604,952.00		\$1,160,429.00
300 Purchased Professional and Technical Services				
322 Professional Educational Services – Ius	705,287.00	733,230.00	260,169.00	1,698,686.00
330 Other Professional Services		173,459.00		173,459.00
340 Technical Services		19,644.00		19,644.00
Total Purchased Professional and Technical Services	\$705,287.00	\$926,333.00	\$260,169.00	\$1,891,789.00
500 Other Purchased Services				
561 Tuition To Other School Districts Within the State	31,000.00	844,081.00		875,081.00
562 Tuition To Pennsylvania Charter Schools		422,249.00		422,249.00
567 Tuition To Approved Private Schools (APS) and PA Chartered Schools for the Deaf and Blind	181,549.00	163,912.00		345,461.00
568 Tuition To Private Residential Rehabilitative Institutions (PRRI) [In-State] and Detention Centers		9,379.00		9,379.00
Total Other Purchased Services	\$212,549.00	\$1,439,621.00		\$1,652,170.00
600 Supplies				
610 General Supplies	1,736.00	21,634.00		23,370.00
640 Books and Periodicals	632.00	435.00		1,067.00
Total Supplies	\$2,368.00	\$22,069.00		\$24,437.00
Total 1200 Special Programs – Elementary / Secondary	\$2,211,844.00	\$3,920,331.00	\$260,169.00	\$6,392,344.00

LEA : 122097203 Morrisville Borough SD

Printed 1/14/2019 10:41:32 AM

General Fund (10)

1210 Life Skills Support

	Elementary	Secondary	Federal	Total
100 <u>Personnel Services – Salaries</u>				
100 Personnel Services – Salaries		106,738.00		106,738.00
Total Personnel Services – Salaries		\$106,738.00		\$106,738.00
200 <u>Personnel Services – Employee Benefits</u>				
220 Social Security Contributions		7,806.00		7,806.00
230 PSERS Retirement Contributions		35,829.00		35,829.00
260 Workers’ Compensation		1,596.00		1,596.00
270 Group Insurance – Self-Insurance		29,457.00		29,457.00
Total Personnel Services – Employee Benefits		\$74,688.00		\$74,688.00
300 <u>Purchased Professional and Technical Services</u>				
322 Professional Educational Services – Ius		151,544.00		151,544.00
Total Purchased Professional and Technical Services		\$151,544.00		\$151,544.00
500 <u>Other Purchased Services</u>				
561 Tuition To Other School Districts Within the State		767,306.00		767,306.00
Total Other Purchased Services		\$767,306.00		\$767,306.00
600 <u>Supplies</u>				
610 General Supplies		515.00		515.00
Total Supplies		\$515.00		\$515.00
Total 1210 Life Skills Support		\$1,100,791.00		\$1,100,791.00

LEA : 122097203 Morrisville Borough SD

Printed 1/14/2019 10:41:32 AM

General Fund (10)

1220 Sensory Support

	<u>Elementary</u>	<u>Secondary</u>	<u>Federal</u>	<u>Total</u>
300 <u>Purchased Professional and Technical Services</u>				
322 Professional Educational Services – lus	285,095.00	71,763.00		356,858.00
Total Purchased Professional and Technical Services	\$285,095.00	\$71,763.00		\$356,858.00
Total 1220 Sensory Support	\$285,095.00	\$71,763.00		\$356,858.00

LEA : 122097203 Morrisville Borough SD

Printed 1/14/2019 10:41:32 AM

General Fund (10)

1230 Emotional Support

	Elementary	Secondary	Federal	Total
100 <u>Personnel Services – Salaries</u>				
100 Personnel Services – Salaries	310,215.00	176,262.00		486,477.00
Total Personnel Services – Salaries	\$310,215.00	\$176,262.00		\$486,477.00
200 <u>Personnel Services – Employee Benefits</u>				
220 Social Security Contributions	23,330.00	12,914.00		36,244.00
230 PSERS Retirement Contributions	104,129.00	58,970.00		163,099.00
260 Workers’ Compensation		1,631.00		1,631.00
270 Group Insurance – Self-Insurance	5,094.00	102,834.00		107,928.00
Total Personnel Services – Employee Benefits	\$132,553.00	\$176,349.00		\$308,902.00
300 <u>Purchased Professional and Technical Services</u>				
322 Professional Educational Services – Ius	289,379.00	376,970.00		666,349.00
Total Purchased Professional and Technical Services	\$289,379.00	\$376,970.00		\$666,349.00
500 <u>Other Purchased Services</u>				
561 Tuition To Other School Districts Within the State		76,775.00		76,775.00
562 Tuition To Pennsylvania Charter Schools		422,249.00		422,249.00
Total Other Purchased Services		\$499,024.00		\$499,024.00
Total 1230 Emotional Support	\$732,147.00	\$1,228,605.00		\$1,960,752.00

LEA : 122097203 Morrisville Borough SD

Printed 1/14/2019 10:41:32 AM

General Fund (10)				
1240 Academic Support	<u>Elementary</u>	<u>Secondary</u>	<u>Federal</u>	<u>Total</u>
100 <u>Personnel Services – Salaries</u>				
100 Personnel Services – Salaries	425,948.00	538,855.00		964,803.00
Total Personnel Services – Salaries	\$425,948.00	\$538,855.00		\$964,803.00
200 <u>Personnel Services – Employee Benefits</u>				
220 Social Security Contributions	40,662.00	40,228.00		80,890.00
230 PSERS Retirement Contributions	177,216.00	180,651.00		357,867.00
260 Workers’ Compensation		7,228.00		7,228.00
270 Group Insurance – Self-Insurance	205,046.00	74,611.00		279,657.00
Total Personnel Services – Employee Benefits	\$422,924.00	\$302,718.00		\$725,642.00
300 <u>Purchased Professional and Technical Services</u>				
322 Professional Educational Services – Ius			260,169.00	260,169.00
330 Other Professional Services		173,459.00		173,459.00
Total Purchased Professional and Technical Services		\$173,459.00	\$260,169.00	\$433,628.00
500 <u>Other Purchased Services</u>				
561 Tuition To Other School Districts Within the State	31,000.00			31,000.00
Total Other Purchased Services	\$31,000.00			\$31,000.00
600 <u>Supplies</u>				
610 General Supplies	1,736.00	723.00		2,459.00
640 Books and Periodicals	632.00	435.00		1,067.00
Total Supplies	\$2,368.00	\$1,158.00		\$3,526.00
Total 1240 Academic Support	\$882,240.00	\$1,016,190.00	\$260,169.00	\$2,158,599.00

LEA : 122097203 Morrisville Borough SD

Printed 1/14/2019 10:41:32 AM

General Fund (10)				
1241 Learning Support – Public	<u>Elementary</u>	<u>Secondary</u>	<u>Federal</u>	<u>Total</u>
100 <u>Personnel Services – Salaries</u>				
100 Personnel Services – Salaries	324,110.00	520,383.00		844,493.00
Total Personnel Services – Salaries	\$324,110.00	\$520,383.00		\$844,493.00
200 <u>Personnel Services – Employee Benefits</u>				
220 Social Security Contributions	33,140.00	38,971.00		72,111.00
230 PSERS Retirement Contributions	143,032.00	174,450.00		317,482.00
260 Workers’ Compensation		7,228.00		7,228.00
270 Group Insurance – Self-Insurance	182,259.00	69,127.00		251,386.00
Total Personnel Services – Employee Benefits	\$358,431.00	\$289,776.00		\$648,207.00
300 <u>Purchased Professional and Technical Services</u>				
322 Professional Educational Services – Ius			260,169.00	260,169.00
330 Other Professional Services		173,459.00		173,459.00
Total Purchased Professional and Technical Services		\$173,459.00	\$260,169.00	\$433,628.00
500 <u>Other Purchased Services</u>				
561 Tuition To Other School Districts Within the State	31,000.00			31,000.00
Total Other Purchased Services	\$31,000.00			\$31,000.00
600 <u>Supplies</u>				
610 General Supplies	1,192.00	427.00		1,619.00
640 Books and Periodicals	164.00			164.00
Total Supplies	\$1,356.00	\$427.00		\$1,783.00
Total 1241 Learning Support – Public	\$714,897.00	\$984,045.00	\$260,169.00	\$1,959,111.00

LEA : 122097203 Morrisville Borough SD

Printed 1/14/2019 10:41:32 AM

General Fund (10)				
1243 Gifted Support				
	<u>Elementary</u>	<u>Secondary</u>	<u>Federal</u>	<u>Total</u>
100 <u>Personnel Services – Salaries</u>				
100 Personnel Services – Salaries	101,838.00	18,472.00		120,310.00
Total Personnel Services – Salaries	\$101,838.00	\$18,472.00		\$120,310.00
200 <u>Personnel Services – Employee Benefits</u>				
220 Social Security Contributions	7,522.00	1,257.00		8,779.00
230 PSERS Retirement Contributions	34,184.00	6,201.00		40,385.00
270 Group Insurance – Self-Insurance	22,787.00	5,484.00		28,271.00
Total Personnel Services – Employee Benefits	\$64,493.00	\$12,942.00		\$77,435.00
600 <u>Supplies</u>				
610 General Supplies	544.00	296.00		840.00
640 Books and Periodicals	468.00	435.00		903.00
Total Supplies	\$1,012.00	\$731.00		\$1,743.00
Total 1243 Gifted Support	\$167,343.00	\$32,145.00		\$199,488.00

LEA : 122097203 Morrisville Borough SD

Printed 1/14/2019 10:41:32 AM

General Fund (10)

1270 Multi-Handicapped Support

	<u>Elementary</u>	<u>Secondary</u>	<u>Federal</u>	<u>Total</u>
300 <u>Purchased Professional and Technical Services</u>				
322 Professional Educational Services – lus	43,444.00	125,091.00		168,535.00
Total Purchased Professional and Technical Services	\$43,444.00	\$125,091.00		\$168,535.00
Total 1270 Multi-Handicapped Support	\$43,444.00	\$125,091.00		\$168,535.00

LEA : 122097203 Morrisville Borough SD

Printed 1/14/2019 10:41:32 AM

General Fund (10)				
1290 Special Programs - Other Support	<u>Elementary</u>	<u>Secondary</u>	<u>Federal</u>	<u>Total</u>
100 <u>Personnel Services – Salaries</u>				
100 Personnel Services – Salaries		105,501.00		105,501.00
Total Personnel Services – Salaries		\$105,501.00		\$105,501.00
200 <u>Personnel Services – Employee Benefits</u>				
220 Social Security Contributions		8,369.00		8,369.00
230 PSERS Retirement Contributions		35,414.00		35,414.00
270 Group Insurance – Self-Insurance		7,414.00		7,414.00
Total Personnel Services – Employee Benefits		\$51,197.00		\$51,197.00
300 <u>Purchased Professional and Technical Services</u>				
322 Professional Educational Services – Ius	87,369.00	7,862.00		95,231.00
340 Technical Services		19,644.00		19,644.00
Total Purchased Professional and Technical Services	\$87,369.00	\$27,506.00		\$114,875.00
500 <u>Other Purchased Services</u>				
567 Tuition To Approved Private Schools (APS) and PA Chartered Schools for the Deaf and Blind	181,549.00	163,912.00		345,461.00
568 Tuition To Private Residential Rehabilitative Institutions (PRRI) [In-State] and Detention Centers		9,379.00		9,379.00
Total Other Purchased Services	\$181,549.00	\$173,291.00		\$354,840.00
600 <u>Supplies</u>				
610 General Supplies		20,396.00		20,396.00
Total Supplies		\$20,396.00		\$20,396.00
Total 1290 Special Programs - Other Support	\$268,918.00	\$377,891.00		\$646,809.00

LEA : 122097203 Morrisville Borough SD

Printed 1/14/2019 10:41:32 AM

General Fund (10)

1300 Vocational Education

	Elementary	Secondary	Federal	Total
100 Personnel Services – Salaries				
100 Personnel Services – Salaries		103,895.00		103,895.00
Total Personnel Services – Salaries		\$103,895.00		\$103,895.00
200 Personnel Services – Employee Benefits				
220 Social Security Contributions		7,554.00		7,554.00
230 PSERS Retirement Contributions		31,375.00		31,375.00
260 Workers’ Compensation		1,727.00		1,727.00
270 Group Insurance – Self-Insurance		20,856.00		20,856.00
Total Personnel Services – Employee Benefits		\$61,512.00		\$61,512.00
500 Other Purchased Services				
564 Tuition To Career and Technology Centers		743,006.00		743,006.00
580 Travel		4,225.00		4,225.00
Total Other Purchased Services		\$747,231.00		\$747,231.00
600 Supplies				
610 General Supplies		720.00		720.00
640 Books and Periodicals		1,000.00		1,000.00
Total Supplies		\$1,720.00		\$1,720.00
Total 1300 Vocational Education		\$914,358.00		\$914,358.00

LEA : 122097203 Morrisville Borough SD

Printed 1/14/2019 10:41:32 AM

General Fund (10)				
1400 Other Instructional Programs – Elementary / Secondary	<u>Elementary</u>	<u>Secondary</u>	<u>Federal</u>	<u>Total</u>
100 <u>Personnel Services – Salaries</u>				
100 Personnel Services – Salaries	1,769.00	4,246.00		6,015.00
Total Personnel Services – Salaries	\$1,769.00	\$4,246.00		\$6,015.00
200 <u>Personnel Services – Employee Benefits</u>				
220 Social Security Contributions	133.00	315.00		448.00
230 PSERS Retirement Contributions	594.00	1,425.00		2,019.00
270 Group Insurance – Self-Insurance		268.00		268.00
Total Personnel Services – Employee Benefits	\$727.00	\$2,008.00		\$2,735.00
300 <u>Purchased Professional and Technical Services</u>				
322 Professional Educational Services – Ius	226.00	541.00		767.00
Total Purchased Professional and Technical Services	\$226.00	\$541.00		\$767.00
400 <u>Purchased Property Services</u>				
420 Utility Services	66.00	66.00		132.00
Total Purchased Property Services	\$66.00	\$66.00		\$132.00
500 <u>Other Purchased Services</u>				
561 Tuition To Other School Districts Within the State	3,944.00	3,944.00		7,888.00
Total Other Purchased Services	\$3,944.00	\$3,944.00		\$7,888.00
Total 1400 Other Instructional Programs – Elementary / Secondary	\$6,732.00	\$10,805.00		\$17,537.00

LEA : 122097203 Morrisville Borough SD

Printed 1/14/2019 10:41:32 AM

General Fund (10)

1430 Homebound Instruction	Elementary	Secondary	Federal	Total
100 <u>Personnel Services – Salaries</u>				
100 Personnel Services – Salaries	1,769.00	4,246.00		6,015.00
Total Personnel Services – Salaries	\$1,769.00	\$4,246.00		\$6,015.00
200 <u>Personnel Services – Employee Benefits</u>				
220 Social Security Contributions	133.00	315.00		448.00
230 PSERS Retirement Contributions	594.00	1,425.00		2,019.00
270 Group Insurance – Self-Insurance		268.00		268.00
Total Personnel Services – Employee Benefits	\$727.00	\$2,008.00		\$2,735.00
300 <u>Purchased Professional and Technical Services</u>				
322 Professional Educational Services – Ius	226.00	541.00		767.00
Total Purchased Professional and Technical Services	\$226.00	\$541.00		\$767.00
Total 1430 Homebound Instruction	\$2,722.00	\$6,795.00		\$9,517.00

LEA : 122097203 Morrisville Borough SD

Printed 1/14/2019 10:41:32 AM

General Fund (10)

1440 Alternative Regular Education Programs	<u>Elementary</u>	<u>Secondary</u>	<u>Federal</u>	<u>Total</u>
500 <u>Other Purchased Services</u>				
561 Tuition To Other School Districts Within the State	3,944.00	3,944.00		7,888.00
Total Other Purchased Services	\$3,944.00	\$3,944.00		\$7,888.00
Total 1440 Alternative Regular Education Programs	\$3,944.00	\$3,944.00		\$7,888.00

LEA : 122097203 Morrisville Borough SD

Printed 1/14/2019 10:41:32 AM

General Fund (10)

1441 Adjudicated / Court-Placed Programs	<u>Elementary</u>	<u>Secondary</u>	<u>Federal</u>	<u>Total</u>
500 <u>Other Purchased Services</u>				
561 Tuition To Other School Districts Within the State	3,944.00	3,944.00		7,888.00
Total Other Purchased Services	\$3,944.00	\$3,944.00		\$7,888.00
Total 1441 Adjudicated / Court-Placed Programs	\$3,944.00	\$3,944.00		\$7,888.00

LEA : 122097203 Morrisville Borough SD

Printed 1/14/2019 10:41:32 AM

General Fund (10)

1490 Additional Other Instructional Programs	<u>Elementary</u>	<u>Secondary</u>	<u>Federal</u>	<u>Total</u>
400 <u>Purchased Property Services</u>				
420 Utility Services	66.00	66.00		132.00
Total Purchased Property Services	\$66.00	\$66.00		\$132.00
Total 1490 Additional Other Instructional Programs	\$66.00	\$66.00		\$132.00

LEA : 122097203 Morrisville Borough SD

Printed 1/14/2019 10:41:32 AM

General Fund (10)

1500 Nonpublic School Programs

	<u>Elementary</u>	<u>Secondary</u>	<u>Federal</u>	<u>Total</u>
300 <u>Purchased Professional and Technical Services</u>				
322 Professional Educational Services – lus			7,923.00	7,923.00
Total Purchased Professional and Technical Services			\$7,923.00	\$7,923.00
Total 1500 Nonpublic School Programs			\$7,923.00	\$7,923.00

LEA : 122097203 Morrisville Borough SD

Printed 1/14/2019 10:41:32 AM

General Fund (10)				
1800 Pre-Kindergarten	<u>Elementary</u>	<u>Secondary</u>	<u>Federal</u>	<u>Total</u>
100 <u>Personnel Services – Salaries</u>				
100 Personnel Services – Salaries				76,010.00
Total Personnel Services – Salaries				\$76,010.00
200 <u>Personnel Services – Employee Benefits</u>				
220 Social Security Contributions				5,464.00
230 PSERS Retirement Contributions				25,514.00
270 Group Insurance – Self-Insurance				29,155.00
Total Personnel Services – Employee Benefits				\$60,133.00
300 <u>Purchased Professional and Technical Services</u>				
322 Professional Educational Services – Ius				466,544.00
Total Purchased Professional and Technical Services				\$466,544.00
600 <u>Supplies</u>				
610 General Supplies				1,000.00
Total Supplies				\$1,000.00
Total 1800 Pre-Kindergarten				\$603,687.00

LEA : 122097203 Morrisville Borough SD

Printed 1/14/2019 10:41:32 AM

General Fund (10)				
1801 Pre-K Instruction	<u>Elementary</u>	<u>Secondary</u>	<u>Federal</u>	<u>Total</u>
100 <u>Personnel Services – Salaries</u>				
100 Personnel Services – Salaries				76,010.00
Total Personnel Services – Salaries				\$76,010.00
200 <u>Personnel Services – Employee Benefits</u>				
220 Social Security Contributions				5,464.00
230 PSERS Retirement Contributions				25,514.00
270 Group Insurance – Self-Insurance				29,155.00
Total Personnel Services – Employee Benefits				\$60,133.00
300 <u>Purchased Professional and Technical Services</u>				
322 Professional Educational Services – Ius				466,544.00
Total Purchased Professional and Technical Services				\$466,544.00
600 <u>Supplies</u>				
610 General Supplies				1,000.00
Total Supplies				\$1,000.00
Total 1801 Pre-K Instruction				\$603,687.00

LEA : 122097203 Morrisville Borough SD

Printed 1/14/2019 10:41:34 AM

General Fund (10)	
2000 Support Services	<u>Total</u>
100 <u>Personnel Services – Salaries</u>	
100 Personnel Services – Salaries	2,126,645.00
Total Personnel Services – Salaries	\$2,126,645.00
200 <u>Personnel Services – Employee Benefits</u>	
220 Social Security Contributions	158,510.00
230 PSERS Retirement Contributions	690,537.00
260 Workers' Compensation	33,644.00
270 Group Insurance – Self-Insurance	415,659.00
Total Personnel Services – Employee Benefits	\$1,298,350.00
300 <u>Purchased Professional and Technical Services</u>	
310 Official / Administrative Services	139,151.00
322 Professional Educational Services – Ius	88,256.00
323 Professional Educational Services – Other Educational Agencies	8,054.00
329 Professional Educational Services – Other	65,532.00
330 Other Professional Services	33,287.00
340 Technical Services	182,955.00
390 Other Purchased Professional and Technical Services	9,800.00
Total Purchased Professional and Technical Services	\$527,035.00
400 <u>Purchased Property Services</u>	
410 Cleaning Services	96,838.00
420 Utility Services	134,573.00
430 Repairs and Maintenance Services	156,160.00
440 Rentals	30,159.00
460 Extermination Services	1,275.00
Total Purchased Property Services	\$419,005.00
500 <u>Other Purchased Services</u>	
513 Contracted Carriers	49,219.00
516 Student Transportation Services From the IU	314,192.00
520 Insurance – General	150.00
523 General Property and Liability Insurance	96,711.00
530 Communications	40,012.00
541 Advertising Related to Federal Grant Awards	2,194.00
550 Printing and Binding	1,183.00
580 Travel	6,664.00
595 IU Payments By Withholding	4,545.00
599 Other Miscellaneous Purchased Services	49,568.00
Total Other Purchased Services	\$564,438.00
600 <u>Supplies</u>	
610 General Supplies	85,771.00
620 Energy	66,332.00
630 Food	(10,882.00)
640 Books and Periodicals	93,240.00
Total Supplies	\$234,461.00

LEA : 122097203 Morrisville Borough SD

Printed 1/14/2019 10:41:34 AM

General Fund (10)	
2000 Support Services	<u>Total</u>
700 <u>Property</u>	
752 Capital Equipment – Original and Additional	90,352.00
762 Capitalized Equipment - Replacement	7,083.00
Total Property	\$97,435.00
800 <u>Other Objects</u>	
810 Dues and Fees	14,994.00
Total Other Objects	\$14,994.00
Total 2000 Support Services	\$5,282,363.00

LEA : 122097203 Morrisville Borough SD

Printed 1/14/2019 10:41:34 AM

General Fund (10)				
2100 Support Services – Students	<u>Elementary</u>	<u>Secondary</u>	<u>Federal</u>	<u>Total</u>
100 <u>Personnel Services – Salaries</u>				
100 Personnel Services – Salaries	186,555.00	162,680.00	28,629.00	426,555.00
Total Personnel Services – Salaries	\$186,555.00	\$162,680.00	\$28,629.00	\$426,555.00
200 <u>Personnel Services – Employee Benefits</u>				
220 Social Security Contributions	13,817.00	12,460.00		29,912.00
230 PSERS Retirement Contributions	62,441.00	54,428.00		133,212.00
260 Workers’ Compensation	2,112.00	1,365.00		4,191.00
270 Group Insurance – Self-Insurance	32,759.00	38,123.00	4,184.00	100,293.00
Total Personnel Services – Employee Benefits	\$111,129.00	\$106,376.00	\$4,184.00	\$267,608.00
300 <u>Purchased Professional and Technical Services</u>				
322 Professional Educational Services – Ius	83,520.00	4,736.00		88,256.00
329 Professional Educational Services – Other			63,850.00	63,850.00
330 Other Professional Services	4,001.00	281.00		4,282.00
390 Other Purchased Professional and Technical Services	4,300.00	5,500.00		9,800.00
Total Purchased Professional and Technical Services	\$91,821.00	\$10,517.00	\$63,850.00	\$166,188.00
500 <u>Other Purchased Services</u>				
550 Printing and Binding		121.00		121.00
580 Travel	300.00	26.00		326.00
599 Other Miscellaneous Purchased Services			6,078.00	6,078.00
Total Other Purchased Services	\$300.00	\$147.00	\$6,078.00	\$6,525.00
600 <u>Supplies</u>				
610 General Supplies	2,106.00	1,994.00		4,100.00
Total Supplies	\$2,106.00	\$1,994.00		\$4,100.00
700 <u>Property</u>				
752 Capital Equipment – Original and Additional		641.00		641.00
Total Property		\$641.00		\$641.00
Total 2100 Support Services – Students	\$391,911.00	\$282,355.00	\$102,741.00	\$871,617.00

LEA : 122097203 Morrisville Borough SD

Printed 1/14/2019 10:41:34 AM

General Fund (10)				
2110 Supervision of Student Services	<u>Elementary</u>	<u>Secondary</u>	<u>Federal</u>	<u>Total</u>
100 <u>Personnel Services – Salaries</u>				
100 Personnel Services – Salaries			28,629.00	28,629.00
Total Personnel Services – Salaries			\$28,629.00	\$28,629.00
200 <u>Personnel Services – Employee Benefits</u>				
270 Group Insurance – Self-Insurance			4,184.00	4,184.00
Total Personnel Services – Employee Benefits			\$4,184.00	\$4,184.00
300 <u>Purchased Professional and Technical Services</u>				
322 Professional Educational Services – Ius	83,520.00	4,736.00		88,256.00
329 Professional Educational Services – Other			63,850.00	63,850.00
Total Purchased Professional and Technical Services	\$83,520.00	\$4,736.00	\$63,850.00	\$152,106.00
500 <u>Other Purchased Services</u>				
580 Travel	300.00	26.00		326.00
599 Other Miscellaneous Purchased Services			6,078.00	6,078.00
Total Other Purchased Services	\$300.00	\$26.00	\$6,078.00	\$6,404.00
600 <u>Supplies</u>				
610 General Supplies	1,848.00	912.00		2,760.00
Total Supplies	\$1,848.00	\$912.00		\$2,760.00
700 <u>Property</u>				
752 Capital Equipment – Original and Additional		641.00		641.00
Total Property		\$641.00		\$641.00
Total 2110 Supervision of Student Services	\$85,668.00	\$6,315.00	\$102,741.00	\$194,724.00

LEA : 122097203 Morrisville Borough SD

Printed 1/14/2019 10:41:34 AM

General Fund (10)				
2111 Supervision of Student Services – Head of Component	<u>Elementary</u>	<u>Secondary</u>	<u>Federal</u>	<u>Total</u>
100 <u>Personnel Services – Salaries</u>				
100 Personnel Services – Salaries			28,629.00	28,629.00
Total Personnel Services – Salaries			\$28,629.00	\$28,629.00
200 <u>Personnel Services – Employee Benefits</u>				
270 Group Insurance – Self-Insurance			4,184.00	4,184.00
Total Personnel Services – Employee Benefits			\$4,184.00	\$4,184.00
300 <u>Purchased Professional and Technical Services</u>				
322 Professional Educational Services – Ius	83,520.00	4,736.00		88,256.00
329 Professional Educational Services – Other			63,850.00	63,850.00
Total Purchased Professional and Technical Services	\$83,520.00	\$4,736.00	\$63,850.00	\$152,106.00
500 <u>Other Purchased Services</u>				
580 Travel	300.00	26.00		326.00
599 Other Miscellaneous Purchased Services			6,078.00	6,078.00
Total Other Purchased Services	\$300.00	\$26.00	\$6,078.00	\$6,404.00
600 <u>Supplies</u>				
610 General Supplies	1,848.00	912.00		2,760.00
Total Supplies	\$1,848.00	\$912.00		\$2,760.00
700 <u>Property</u>				
752 Capital Equipment – Original and Additional		641.00		641.00
Total Property		\$641.00		\$641.00
Total 2111 Supervision of Student Services – Head of Component	\$85,668.00	\$6,315.00	\$102,741.00	\$194,724.00

LEA : 122097203 Morrisville Borough SD

Printed 1/14/2019 10:41:34 AM

General Fund (10)				
2120 Guidance Services	<u>Elementary</u>	<u>Secondary</u>	<u>Federal</u>	<u>Total</u>
100 <u>Personnel Services – Salaries</u>				
100 Personnel Services – Salaries	154,184.00	129,336.00		283,520.00
Total Personnel Services – Salaries	\$154,184.00	\$129,336.00		\$283,520.00
200 <u>Personnel Services – Employee Benefits</u>				
220 Social Security Contributions	11,397.00	9,968.00		21,365.00
230 PSERS Retirement Contributions	51,575.00	43,235.00		94,810.00
260 Workers’ Compensation	2,112.00	1,365.00		3,477.00
270 Group Insurance – Self-Insurance	29,359.00	34,621.00		63,980.00
Total Personnel Services – Employee Benefits	\$94,443.00	\$89,189.00		\$183,632.00
300 <u>Purchased Professional and Technical Services</u>				
390 Other Purchased Professional and Technical Services	4,300.00	5,500.00		9,800.00
Total Purchased Professional and Technical Services	\$4,300.00	\$5,500.00		\$9,800.00
500 <u>Other Purchased Services</u>				
550 Printing and Binding		121.00		121.00
Total Other Purchased Services		\$121.00		\$121.00
600 <u>Supplies</u>				
610 General Supplies		1,082.00		1,082.00
Total Supplies		\$1,082.00		\$1,082.00
Total 2120 Guidance Services	\$252,927.00	\$225,228.00		\$478,155.00

LEA : 122097203 Morrisville Borough SD

Printed 1/14/2019 10:41:34 AM

General Fund (10)				
2140 Psychological Services	<u>Elementary</u>	<u>Secondary</u>	<u>Federal</u>	<u>Total</u>
100 <u>Personnel Services – Salaries</u>				
100 Personnel Services – Salaries	32,371.00	33,344.00		65,715.00
Total Personnel Services – Salaries	\$32,371.00	\$33,344.00		\$65,715.00
200 <u>Personnel Services – Employee Benefits</u>				
220 Social Security Contributions	2,420.00	2,492.00		4,912.00
230 PSERS Retirement Contributions	10,866.00	11,193.00		22,059.00
270 Group Insurance – Self-Insurance	3,400.00	3,502.00		6,902.00
Total Personnel Services – Employee Benefits	\$16,686.00	\$17,187.00		\$33,873.00
300 <u>Purchased Professional and Technical Services</u>				
330 Other Professional Services	4,001.00	281.00		4,282.00
Total Purchased Professional and Technical Services	\$4,001.00	\$281.00		\$4,282.00
600 <u>Supplies</u>				
610 General Supplies	258.00			258.00
Total Supplies	\$258.00			\$258.00
Total 2140 Psychological Services	\$53,316.00	\$50,812.00		\$104,128.00

LEA : 122097203 Morrisville Borough SD

Printed 1/14/2019 10:41:34 AM

General Fund (10)

2170 Student Accounting Services	<u>Elementary</u>	<u>Secondary</u>	<u>Federal</u>	<u>Total</u>
100 <u>Personnel Services – Salaries</u>				
100 Personnel Services – Salaries				48,691.00
Total Personnel Services – Salaries				\$48,691.00
200 <u>Personnel Services – Employee Benefits</u>				
220 Social Security Contributions				3,635.00
230 PSERS Retirement Contributions				16,343.00
260 Workers’ Compensation				714.00
270 Group Insurance – Self-Insurance				25,227.00
Total Personnel Services – Employee Benefits				\$45,919.00
Total 2170 Student Accounting Services				\$94,610.00

LEA : 122097203 Morrisville Borough SD

Printed 1/14/2019 10:41:34 AM

General Fund (10)				
2200 Support Services – Instructional Staff	<u>Elementary</u>	<u>Secondary</u>	<u>Federal</u>	<u>Total</u>
100 <u>Personnel Services – Salaries</u>				
100 Personnel Services – Salaries	8,039.00	61,968.00		70,007.00
Total Personnel Services – Salaries	\$8,039.00	\$61,968.00		\$70,007.00
200 <u>Personnel Services – Employee Benefits</u>				
220 Social Security Contributions	609.00	4,619.00		5,228.00
230 PSERS Retirement Contributions	2,698.00	20,801.00		23,499.00
270 Group Insurance – Self-Insurance	46.00	9,507.00		9,553.00
Total Personnel Services – Employee Benefits	\$3,353.00	\$34,927.00		\$38,280.00
300 <u>Purchased Professional and Technical Services</u>				
323 Professional Educational Services – Other Educational Agencies	7,829.00	225.00		8,054.00
330 Other Professional Services	2,915.00	2,916.00		5,831.00
Total Purchased Professional and Technical Services	\$10,744.00	\$3,141.00		\$13,885.00
500 <u>Other Purchased Services</u>				
580 Travel	934.00	516.00		1,450.00
Total Other Purchased Services	\$934.00	\$516.00		\$1,450.00
600 <u>Supplies</u>				
610 General Supplies			10,766.00	10,766.00
Total Supplies			\$10,766.00	\$10,766.00
Total 2200 Support Services – Instructional Staff	\$23,070.00	\$100,552.00	\$10,766.00	\$134,388.00

LEA : 122097203 Morrisville Borough SD

Printed 1/14/2019 10:41:34 AM

General Fund (10)

2250 School Library Services

	<u>Elementary</u>	<u>Secondary</u>	<u>Federal</u>	<u>Total</u>
100 <u>Personnel Services – Salaries</u>				
100 Personnel Services – Salaries		53,929.00		53,929.00
Total Personnel Services – Salaries		\$53,929.00		\$53,929.00
200 <u>Personnel Services – Employee Benefits</u>				
220 Social Security Contributions		4,010.00		4,010.00
230 PSERS Retirement Contributions		18,103.00		18,103.00
270 Group Insurance – Self-Insurance		9,463.00		9,463.00
Total Personnel Services – Employee Benefits		\$31,576.00		\$31,576.00
Total 2250 School Library Services		\$85,505.00		\$85,505.00

LEA : 122097203 Morrisville Borough SD

Printed 1/14/2019 10:41:34 AM

General Fund (10)

2260 Instruction and Curriculum Development Services	<u>Elementary</u>	<u>Secondary</u>	<u>Federal</u>	<u>Total</u>
100 <u>Personnel Services – Salaries</u>				
100 Personnel Services – Salaries	8,039.00	8,039.00		16,078.00
Total Personnel Services – Salaries	\$8,039.00	\$8,039.00		\$16,078.00
200 <u>Personnel Services – Employee Benefits</u>				
220 Social Security Contributions	609.00	609.00		1,218.00
230 PSERS Retirement Contributions	2,698.00	2,698.00		5,396.00
270 Group Insurance – Self-Insurance	46.00	44.00		90.00
Total Personnel Services – Employee Benefits	\$3,353.00	\$3,351.00		\$6,704.00
Total 2260 Instruction and Curriculum Development Services	\$11,392.00	\$11,390.00		\$22,782.00

LEA : 122097203 Morrisville Borough SD

Printed 1/14/2019 10:41:34 AM

General Fund (10)				
2270 Instructional Staff Professional Development Services	<u>Elementary</u>	<u>Secondary</u>	<u>Federal</u>	<u>Total</u>
300 <u>Purchased Professional and Technical Services</u>				
323 Professional Educational Services – Other Educational Agencies	7,829.00	225.00		8,054.00
330 Other Professional Services	2,915.00	2,916.00		5,831.00
Total Purchased Professional and Technical Services	\$10,744.00	\$3,141.00		\$13,885.00
500 <u>Other Purchased Services</u>				
580 Travel	934.00	516.00		1,450.00
Total Other Purchased Services	\$934.00	\$516.00		\$1,450.00
600 <u>Supplies</u>				
610 General Supplies			10,766.00	10,766.00
Total Supplies			\$10,766.00	\$10,766.00
Total 2270 Instructional Staff Professional Development Services	\$11,678.00	\$3,657.00	\$10,766.00	\$26,101.00

LEA : 122097203 Morrisville Borough SD

Printed 1/14/2019 10:41:34 AM

General Fund (10)				
2300 Support Services – Administration	<u>Elementary</u>	<u>Secondary</u>	<u>Federal</u>	<u>Total</u>
100 <u>Personnel Services – Salaries</u>				
100 Personnel Services – Salaries	137,628.00	271,842.00		619,621.00
Total Personnel Services – Salaries	\$137,628.00	\$271,842.00		\$619,621.00
200 <u>Personnel Services – Employee Benefits</u>				
220 Social Security Contributions	10,509.00	20,304.00		49,033.00
230 PSERS Retirement Contributions	46,198.00	91,249.00		217,386.00
260 Workers’ Compensation	2,390.00	2,292.00		6,889.00
270 Group Insurance – Self-Insurance	7,660.00	56,907.00		76,279.00
Total Personnel Services – Employee Benefits	\$66,757.00	\$170,752.00		\$349,587.00
300 <u>Purchased Professional and Technical Services</u>				
310 Official / Administrative Services				13,556.00
330 Other Professional Services				22,000.00
340 Technical Services				152,618.00
Total Purchased Professional and Technical Services				\$188,174.00
500 <u>Other Purchased Services</u>				
520 Insurance – General				150.00
530 Communications		34.00		34.00
541 Advertising Related to Federal Grant Awards				2,194.00
550 Printing and Binding				1,062.00
580 Travel				213.00
Total Other Purchased Services		\$34.00		\$3,653.00
600 <u>Supplies</u>				
610 General Supplies	560.00	3,728.00		7,624.00
630 Food				196.00
640 Books and Periodicals		290.00		290.00
Total Supplies	\$560.00	\$4,018.00		\$8,110.00
700 <u>Property</u>				
752 Capital Equipment – Original and Additional		3,610.00		6,856.00
Total Property		\$3,610.00		\$6,856.00
800 <u>Other Objects</u>				
810 Dues and Fees		3,464.00		14,687.00
Total Other Objects		\$3,464.00		\$14,687.00
Total 2300 Support Services – Administration	\$204,945.00	\$453,720.00		\$1,190,688.00

LEA : 122097203 Morrisville Borough SD

Printed 1/14/2019 10:41:34 AM

General Fund (10)				
2310 Board Services				
	<u>Elementary</u>	<u>Secondary</u>	<u>Federal</u>	<u>Total</u>
100 <u>Personnel Services – Salaries</u>				
100 Personnel Services – Salaries				8,000.00
Total Personnel Services – Salaries				\$8,000.00
200 <u>Personnel Services – Employee Benefits</u>				
220 Social Security Contributions				595.00
230 PSERS Retirement Contributions				2,685.00
Total Personnel Services – Employee Benefits				\$3,280.00
300 <u>Purchased Professional and Technical Services</u>				
310 Official / Administrative Services				1,608.00
330 Other Professional Services				22,000.00
Total Purchased Professional and Technical Services				\$23,608.00
500 <u>Other Purchased Services</u>				
520 Insurance – General				150.00
541 Advertising Related to Federal Grant Awards				2,194.00
550 Printing and Binding				664.00
Total Other Purchased Services				\$3,008.00
600 <u>Supplies</u>				
610 General Supplies				47.00
630 Food				196.00
Total Supplies				\$243.00
800 <u>Other Objects</u>				
810 Dues and Fees				9,343.00
Total Other Objects				\$9,343.00
Total 2310 Board Services				\$47,482.00

LEA : 122097203 Morrisville Borough SD

Printed 1/14/2019 10:41:34 AM

General Fund (10)

2330 Tax Assessment and Collection Services	<u>Elementary</u>	<u>Secondary</u>	<u>Federal</u>	<u>Total</u>
300 <u>Purchased Professional and Technical Services</u>				
310 Official / Administrative Services				11,948.00
Total Purchased Professional and Technical Services				\$11,948.00
Total 2330 Tax Assessment and Collection Services				\$11,948.00

LEA : 122097203 Morrisville Borough SD

Printed 1/14/2019 10:41:34 AM

General Fund (10)

2350 Legal and Accounting Services	<u>Elementary</u>	<u>Secondary</u>	<u>Federal</u>	<u>Total</u>
300 <u>Purchased Professional and Technical Services</u>				
340 Technical Services				152,618.00
Total Purchased Professional and Technical Services				\$152,618.00
Total 2350 Legal and Accounting Services				\$152,618.00

LEA : 122097203 Morrisville Borough SD

Printed 1/14/2019 10:41:34 AM

General Fund (10)				
2360 Office of the Superintendent / Executive Director Services	<u>Elementary</u>	<u>Secondary</u>	<u>Federal</u>	<u>Total</u>
100 <u>Personnel Services – Salaries</u>				
100 Personnel Services – Salaries				202,151.00
Total Personnel Services – Salaries				\$202,151.00
200 <u>Personnel Services – Employee Benefits</u>				
220 Social Security Contributions				17,625.00
230 PSERS Retirement Contributions				77,254.00
260 Workers’ Compensation				2,207.00
270 Group Insurance – Self-Insurance				11,712.00
Total Personnel Services – Employee Benefits				\$108,798.00
500 <u>Other Purchased Services</u>				
530 Communications		34.00		34.00
550 Printing and Binding				398.00
580 Travel				213.00
Total Other Purchased Services		\$34.00		\$645.00
600 <u>Supplies</u>				
610 General Supplies				3,289.00
Total Supplies				\$3,289.00
700 <u>Property</u>				
752 Capital Equipment – Original and Additional				3,246.00
Total Property				\$3,246.00
800 <u>Other Objects</u>				
810 Dues and Fees				1,880.00
Total Other Objects				\$1,880.00
Total 2360 Office of the Superintendent / Executive Director Services		\$34.00		\$320,009.00

LEA : 122097203 Morrisville Borough SD

Printed 1/14/2019 10:41:34 AM

General Fund (10)				
2380 Office of the Principal Services	<u>Elementary</u>	<u>Secondary</u>	<u>Federal</u>	<u>Total</u>
100 <u>Personnel Services – Salaries</u>				
100 Personnel Services – Salaries	137,628.00	271,842.00		409,470.00
Total Personnel Services – Salaries	\$137,628.00	\$271,842.00		\$409,470.00
200 <u>Personnel Services – Employee Benefits</u>				
220 Social Security Contributions	10,509.00	20,304.00		30,813.00
230 PSERS Retirement Contributions	46,198.00	91,249.00		137,447.00
260 Workers' Compensation	2,390.00	2,292.00		4,682.00
270 Group Insurance – Self-Insurance	7,660.00	56,907.00		64,567.00
Total Personnel Services – Employee Benefits	\$66,757.00	\$170,752.00		\$237,509.00
600 <u>Supplies</u>				
610 General Supplies	560.00	3,728.00		4,288.00
640 Books and Periodicals		290.00		290.00
Total Supplies	\$560.00	\$4,018.00		\$4,578.00
700 <u>Property</u>				
752 Capital Equipment – Original and Additional		3,610.00		3,610.00
Total Property		\$3,610.00		\$3,610.00
800 <u>Other Objects</u>				
810 Dues and Fees		3,464.00		3,464.00
Total Other Objects		\$3,464.00		\$3,464.00
Total 2380 Office of the Principal Services	\$204,945.00	\$453,686.00		\$658,631.00

LEA : 122097203 Morrisville Borough SD

Printed 1/14/2019 10:41:34 AM

General Fund (10)

2400 Support Services – Pupil Health	<u>Elementary</u>	<u>Secondary</u>	<u>Federal</u>	<u>Total</u>
100 <u>Personnel Services – Salaries</u>				
100 Personnel Services – Salaries				124,404.00
Total Personnel Services – Salaries				\$124,404.00
200 <u>Personnel Services – Employee Benefits</u>				
220 Social Security Contributions				9,430.00
230 PSERS Retirement Contributions				35,694.00
260 Workers’ Compensation				1,736.00
270 Group Insurance – Self-Insurance				3,631.00
Total Personnel Services – Employee Benefits				\$50,491.00
300 <u>Purchased Professional and Technical Services</u>				
340 Technical Services				6,515.00
Total Purchased Professional and Technical Services				\$6,515.00
600 <u>Supplies</u>				
610 General Supplies				5,434.00
Total Supplies				\$5,434.00
Total 2400 Support Services – Pupil Health				\$186,844.00

LEA : 122097203 Morrisville Borough SD

Printed 1/14/2019 10:41:34 AM

General Fund (10)

2420 Medical Services

<u>Elementary</u>	<u>Secondary</u>	<u>Federal</u>	<u>Total</u>
-------------------	------------------	----------------	--------------

300 Purchased Professional and Technical Services

340 Technical Services			4,515.00
------------------------	--	--	----------

Total Purchased Professional and Technical Services			\$4,515.00
--	--	--	-------------------

Total 2420 Medical Services			\$4,515.00
------------------------------------	--	--	-------------------

LEA : 122097203 Morrisville Borough SD

Printed 1/14/2019 10:41:34 AM

General Fund (10)

2430 Dental Services

<u>Elementary</u>	<u>Secondary</u>	<u>Federal</u>	<u>Total</u>
-------------------	------------------	----------------	--------------

300 Purchased Professional and Technical Services

340 Technical Services			2,000.00
------------------------	--	--	----------

Total Purchased Professional and Technical Services			\$2,000.00
--	--	--	-------------------

Total 2430 Dental Services			\$2,000.00
-----------------------------------	--	--	-------------------

LEA : 122097203 Morrisville Borough SD

Printed 1/14/2019 10:41:34 AM

General Fund (10)

2440 Nursing Services	<u>Elementary</u>	<u>Secondary</u>	<u>Federal</u>	<u>Total</u>
100 <u>Personnel Services – Salaries</u>				
100 Personnel Services – Salaries				124,404.00
Total Personnel Services – Salaries				\$124,404.00
200 <u>Personnel Services – Employee Benefits</u>				
220 Social Security Contributions				9,430.00
230 PSERS Retirement Contributions				35,694.00
260 Workers’ Compensation				1,736.00
270 Group Insurance – Self-Insurance				3,631.00
Total Personnel Services – Employee Benefits				\$50,491.00
600 <u>Supplies</u>				
610 General Supplies				5,434.00
Total Supplies				\$5,434.00
Total 2440 Nursing Services				\$180,329.00

LEA : 122097203 Morrisville Borough SD

Printed 1/14/2019 10:41:34 AM

General Fund (10)				
2500 Support Services – Business	<u>Elementary</u>	<u>Secondary</u>	<u>Federal</u>	<u>Total</u>
100 <u>Personnel Services – Salaries</u>				
100 Personnel Services – Salaries				226,862.00
Total Personnel Services – Salaries				\$226,862.00
200 <u>Personnel Services – Employee Benefits</u>				
220 Social Security Contributions				16,131.00
230 PSERS Retirement Contributions				72,434.00
260 Workers’ Compensation				14,649.00
270 Group Insurance – Self-Insurance				1,557.00
Total Personnel Services – Employee Benefits				\$104,771.00
300 <u>Purchased Professional and Technical Services</u>				
310 Official / Administrative Services				125,595.00
340 Technical Services				4,552.00
Total Purchased Professional and Technical Services				\$130,147.00
400 <u>Purchased Property Services</u>				
440 Rentals				1,859.00
Total Purchased Property Services				\$1,859.00
500 <u>Other Purchased Services</u>				
530 Communications				373.00
580 Travel				4,675.00
Total Other Purchased Services				\$5,048.00
600 <u>Supplies</u>				
610 General Supplies				8,288.00
630 Food				(11,078.00)
Total Supplies				(\$2,790.00)
700 <u>Property</u>				
762 Capitalized Equipment - Replacement				3,969.00
Total Property				\$3,969.00
800 <u>Other Objects</u>				
810 Dues and Fees				(1,011.00)
Total Other Objects				(\$1,011.00)
Total 2500 Support Services – Business				\$468,855.00

LEA : 122097203 Morrisville Borough SD

Printed 1/14/2019 10:41:34 AM

General Fund (10)				
2510 Fiscal Services	<u>Elementary</u>	<u>Secondary</u>	<u>Federal</u>	<u>Total</u>
100 <u>Personnel Services – Salaries</u>				
100 Personnel Services – Salaries				226,862.00
Total Personnel Services – Salaries				\$226,862.00
200 <u>Personnel Services – Employee Benefits</u>				
220 Social Security Contributions				16,131.00
230 PSERS Retirement Contributions				72,434.00
260 Workers’ Compensation				14,649.00
270 Group Insurance – Self-Insurance				1,557.00
Total Personnel Services – Employee Benefits				\$104,771.00
300 <u>Purchased Professional and Technical Services</u>				
310 Official / Administrative Services				125,595.00
340 Technical Services				4,552.00
Total Purchased Professional and Technical Services				\$130,147.00
400 <u>Purchased Property Services</u>				
440 Rentals				1,859.00
Total Purchased Property Services				\$1,859.00
500 <u>Other Purchased Services</u>				
530 Communications				373.00
580 Travel				4,675.00
Total Other Purchased Services				\$5,048.00
600 <u>Supplies</u>				
610 General Supplies				8,288.00
630 Food				(11,078.00)
Total Supplies				(\$2,790.00)
700 <u>Property</u>				
762 Capitalized Equipment - Replacement				3,969.00
Total Property				\$3,969.00
800 <u>Other Objects</u>				
810 Dues and Fees				(1,011.00)
Total Other Objects				(\$1,011.00)
Total 2510 Fiscal Services				\$468,855.00

LEA : 122097203 Morrisville Borough SD

Printed 1/14/2019 10:41:34 AM

General Fund (10)				
2511 Supervision of Fiscal Services - Head of Component	<u>Elementary</u>	<u>Secondary</u>	<u>Federal</u>	<u>Total</u>
100 <u>Personnel Services – Salaries</u>				
100 Personnel Services – Salaries				95,166.00
Total Personnel Services – Salaries				\$95,166.00
200 <u>Personnel Services – Employee Benefits</u>				
220 Social Security Contributions				7,087.00
230 PSERS Retirement Contributions				31,945.00
260 Workers’ Compensation				1,701.00
Total Personnel Services – Employee Benefits				\$40,733.00
300 <u>Purchased Professional and Technical Services</u>				
310 Official / Administrative Services				125,595.00
340 Technical Services				4,552.00
Total Purchased Professional and Technical Services				\$130,147.00
400 <u>Purchased Property Services</u>				
440 Rentals				1,859.00
Total Purchased Property Services				\$1,859.00
500 <u>Other Purchased Services</u>				
530 Communications				373.00
580 Travel				4,675.00
Total Other Purchased Services				\$5,048.00
600 <u>Supplies</u>				
610 General Supplies				8,288.00
Total Supplies				\$8,288.00
700 <u>Property</u>				
762 Capitalized Equipment - Replacement				3,969.00
Total Property				\$3,969.00
800 <u>Other Objects</u>				
810 Dues and Fees				(1,011.00)
Total Other Objects				(\$1,011.00)
Total 2511 Supervision of Fiscal Services - Head of Component				\$284,199.00

LEA : 122097203 Morrisville Borough SD

Printed 1/14/2019 10:41:34 AM

General Fund (10)

2513 Receiving and Disbursing Funds Services	<u>Elementary</u>	<u>Secondary</u>	<u>Federal</u>	<u>Total</u>
100 <u>Personnel Services – Salaries</u>				
100 Personnel Services – Salaries				51,096.00
Total Personnel Services – Salaries				\$51,096.00
200 <u>Personnel Services – Employee Benefits</u>				
220 Social Security Contributions				1,787.00
230 PSERS Retirement Contributions				7,934.00
Total Personnel Services – Employee Benefits				\$9,721.00
Total 2513 Receiving and Disbursing Funds Services				\$60,817.00

LEA : 122097203 Morrisville Borough SD

Printed 1/14/2019 10:41:34 AM

General Fund (10)				
2514 Payroll Services	<u>Elementary</u>	<u>Secondary</u>	<u>Federal</u>	<u>Total</u>
100 <u>Personnel Services – Salaries</u>				
100 Personnel Services – Salaries				56,100.00
Total Personnel Services – Salaries				\$56,100.00
200 <u>Personnel Services – Employee Benefits</u>				
220 Social Security Contributions				1,918.00
230 PSERS Retirement Contributions				8,691.00
Total Personnel Services – Employee Benefits				\$10,609.00
Total 2514 Payroll Services				\$66,709.00

LEA : 122097203 Morrisville Borough SD

Printed 1/14/2019 10:41:34 AM

General Fund (10)

2519 Other Fiscal Services

Elementary Secondary Federal Total

100 <u>Personnel Services – Salaries</u>				
100 Personnel Services – Salaries				24,500.00
Total Personnel Services – Salaries				\$24,500.00
200 <u>Personnel Services – Employee Benefits</u>				
220 Social Security Contributions				5,339.00
230 PSERS Retirement Contributions				23,864.00
260 Workers’ Compensation				12,948.00
270 Group Insurance – Self-Insurance				1,557.00
Total Personnel Services – Employee Benefits				\$43,708.00
600 <u>Supplies</u>				
630 Food				(11,078.00)
Total Supplies				(\$11,078.00)
Total 2519 Other Fiscal Services				\$57,130.00

LEA : 122097203 Morrisville Borough SD

Printed 1/14/2019 10:41:34 AM

General Fund (10)				
2600 Operation and Maintenance of Plant Services	<u>Elementary</u>	<u>Secondary</u>	<u>Federal</u>	<u>Total</u>
100 <u>Personnel Services – Salaries</u>				
100 Personnel Services – Salaries				444,159.00
Total Personnel Services – Salaries				\$444,159.00
200 <u>Personnel Services – Employee Benefits</u>				
220 Social Security Contributions				34,170.00
230 PSERS Retirement Contributions				145,795.00
260 Workers’ Compensation				5,739.00
270 Group Insurance – Self-Insurance				147,858.00
Total Personnel Services – Employee Benefits				\$333,562.00
300 <u>Purchased Professional and Technical Services</u>				
329 Professional Educational Services – Other				1,682.00
340 Technical Services				8,368.00
Total Purchased Professional and Technical Services				\$10,050.00
400 <u>Purchased Property Services</u>				
410 Cleaning Services				96,838.00
420 Utility Services				134,573.00
430 Repairs and Maintenance Services				156,160.00
440 Rentals				28,300.00
460 Extermination Services				1,275.00
Total Purchased Property Services				\$417,146.00
500 <u>Other Purchased Services</u>				
523 General Property and Liability Insurance				96,711.00
530 Communications				39,605.00
Total Other Purchased Services				\$136,316.00
600 <u>Supplies</u>				
610 General Supplies	24,417.00	24,416.00		48,833.00
620 Energy				56,174.00
Total Supplies	\$24,417.00	\$24,416.00		\$105,007.00
700 <u>Property</u>				
752 Capital Equipment – Original and Additional				14,963.00
762 Capitalized Equipment - Replacement				3,114.00
Total Property				\$18,077.00
800 <u>Other Objects</u>				
810 Dues and Fees				1,318.00
Total Other Objects				\$1,318.00
Total 2600 Operation and Maintenance of Plant Services	\$24,417.00	\$24,416.00		\$1,465,635.00

LEA : 122097203 Morrisville Borough SD

Printed 1/14/2019 10:41:34 AM

General Fund (10)

2610 Supervision of Operation and Maintenance of Plant Services	<u>Elementary</u>	<u>Secondary</u>	<u>Federal</u>	<u>Total</u>
100 <u>Personnel Services – Salaries</u>				
100 Personnel Services – Salaries				63,985.00
Total Personnel Services – Salaries				\$63,985.00
200 <u>Personnel Services – Employee Benefits</u>				
220 Social Security Contributions				4,895.00
230 PSERS Retirement Contributions				21,478.00
Total Personnel Services – Employee Benefits				\$26,373.00
Total 2610 Supervision of Operation and Maintenance of Plant Services				\$90,358.00

LEA : 122097203 Morrisville Borough SD

Printed 1/14/2019 10:41:34 AM

General Fund (10)

2611 Supervision of Operation and Maintenance of Plant Services – Head of Component	<u>Elementary</u>	<u>Secondary</u>	<u>Federal</u>	<u>Total</u>
100 <u>Personnel Services – Salaries</u>				
100 Personnel Services – Salaries				63,985.00
Total Personnel Services – Salaries				\$63,985.00
200 <u>Personnel Services – Employee Benefits</u>				
220 Social Security Contributions				4,895.00
230 PSERS Retirement Contributions				21,478.00
Total Personnel Services – Employee Benefits				\$26,373.00
Total 2611 Supervision of Operation and Maintenance of Plant Services – Head of Component				\$90,358.00

LEA : 122097203 Morrisville Borough SD

Printed 1/14/2019 10:41:34 AM

General Fund (10)				
2620 Operation of Buildings Services	<u>Elementary</u>	<u>Secondary</u>	<u>Federal</u>	<u>Total</u>
100 <u>Personnel Services – Salaries</u>				
100 Personnel Services – Salaries				380,174.00
Total Personnel Services – Salaries				\$380,174.00
200 <u>Personnel Services – Employee Benefits</u>				
220 Social Security Contributions				29,275.00
230 PSERS Retirement Contributions				124,317.00
260 Workers’ Compensation				5,739.00
270 Group Insurance – Self-Insurance				147,858.00
Total Personnel Services – Employee Benefits				\$307,189.00
300 <u>Purchased Professional and Technical Services</u>				
329 Professional Educational Services – Other				1,682.00
Total Purchased Professional and Technical Services				\$1,682.00
400 <u>Purchased Property Services</u>				
410 Cleaning Services				92,848.00
420 Utility Services				134,573.00
430 Repairs and Maintenance Services				156,160.00
440 Rentals				28,300.00
460 Extermination Services				1,275.00
Total Purchased Property Services				\$413,156.00
500 <u>Other Purchased Services</u>				
523 General Property and Liability Insurance				96,711.00
530 Communications				39,605.00
Total Other Purchased Services				\$136,316.00
600 <u>Supplies</u>				
610 General Supplies	24,417.00	24,416.00		48,833.00
620 Energy				56,174.00
Total Supplies				\$105,007.00
700 <u>Property</u>				
752 Capital Equipment – Original and Additional				14,963.00
762 Capitalized Equipment - Replacement				3,114.00
Total Property				\$18,077.00
800 <u>Other Objects</u>				
810 Dues and Fees				1,318.00
Total Other Objects				\$1,318.00
Total 2620 Operation of Buildings Services	\$24,417.00	\$24,416.00		\$1,362,919.00

LEA : 122097203 Morrisville Borough SD

Printed 1/14/2019 10:41:34 AM

General Fund (10)

2630 Care and Upkeep of Grounds Services	<u>Elementary</u>	<u>Secondary</u>	<u>Federal</u>	<u>Total</u>
400 <u>Purchased Property Services</u>				
410 Cleaning Services				3,990.00
Total Purchased Property Services				\$3,990.00
Total 2630 Care and Upkeep of Grounds Services				\$3,990.00

LEA : 122097203 Morrisville Borough SD

Printed 1/14/2019 10:41:34 AM

General Fund (10)

2660 Safety and Security Services	<u>Elementary</u>	<u>Secondary</u>	<u>Federal</u>	<u>Total</u>
300 <u>Purchased Professional and Technical Services</u>				
340 Technical Services				8,368.00
Total Purchased Professional and Technical Services				\$8,368.00
Total 2660 Safety and Security Services				\$8,368.00

LEA : 122097203 Morrisville Borough SD

Printed 1/14/2019 10:41:34 AM

General Fund (10)				
2700 Student Transportation Services	<u>Elementary</u>	<u>Secondary</u>	<u>Federal</u>	<u>Total</u>
100 <u>Personnel Services – Salaries</u>				
100 Personnel Services – Salaries				49,235.00
Total Personnel Services – Salaries				\$49,235.00
200 <u>Personnel Services – Employee Benefits</u>				
220 Social Security Contributions				4,391.00
230 PSERS Retirement Contributions				16,527.00
260 Workers’ Compensation				440.00
270 Group Insurance – Self-Insurance				11,120.00
Total Personnel Services – Employee Benefits				\$32,478.00
300 <u>Purchased Professional and Technical Services</u>				
330 Other Professional Services				1,174.00
Total Purchased Professional and Technical Services				\$1,174.00
500 <u>Other Purchased Services</u>				
513 Contracted Carriers				49,219.00
516 Student Transportation Services From the IU				314,192.00
Total Other Purchased Services				\$363,411.00
600 <u>Supplies</u>				
610 General Supplies				69.00
620 Energy				10,158.00
Total Supplies				\$10,227.00
700 <u>Property</u>				
752 Capital Equipment – Original and Additional				644.00
Total Property				\$644.00
Total 2700 Student Transportation Services				\$457,169.00

LEA : 122097203 Morrisville Borough SD

Printed 1/14/2019 10:41:34 AM

General Fund (10)				
2720 Vehicle Operation Services				
	<u>Elementary</u>	<u>Secondary</u>	<u>Federal</u>	<u>Total</u>
100 <u>Personnel Services – Salaries</u>				
100 Personnel Services – Salaries				49,235.00
Total Personnel Services – Salaries				\$49,235.00
200 <u>Personnel Services – Employee Benefits</u>				
220 Social Security Contributions				4,391.00
230 PSERS Retirement Contributions				16,527.00
260 Workers’ Compensation				440.00
270 Group Insurance – Self-Insurance				11,120.00
Total Personnel Services – Employee Benefits				\$32,478.00
300 <u>Purchased Professional and Technical Services</u>				
330 Other Professional Services				1,174.00
Total Purchased Professional and Technical Services				\$1,174.00
500 <u>Other Purchased Services</u>				
513 Contracted Carriers				49,219.00
516 Student Transportation Services From the IU				314,192.00
Total Other Purchased Services				\$363,411.00
600 <u>Supplies</u>				
610 General Supplies				69.00
620 Energy				10,158.00
Total Supplies				\$10,227.00
700 <u>Property</u>				
752 Capital Equipment – Original and Additional				644.00
Total Property				\$644.00
Total 2720 Vehicle Operation Services				\$457,169.00

LEA : 122097203 Morrisville Borough SD

Printed 1/14/2019 10:41:34 AM

General Fund (10)				
2800 Support Services – Central	<u>Elementary</u>	<u>Secondary</u>	<u>Federal</u>	<u>Total</u>
100 <u>Personnel Services – Salaries</u>				
100 Personnel Services – Salaries				165,802.00
Total Personnel Services – Salaries				\$165,802.00
200 <u>Personnel Services – Employee Benefits</u>				
220 Social Security Contributions				10,215.00
230 PSERS Retirement Contributions				45,990.00
270 Group Insurance – Self-Insurance				65,368.00
Total Personnel Services – Employee Benefits				\$121,573.00
300 <u>Purchased Professional and Technical Services</u>				
340 Technical Services				10,902.00
Total Purchased Professional and Technical Services				\$10,902.00
600 <u>Supplies</u>				
610 General Supplies				657.00
640 Books and Periodicals				92,950.00
Total Supplies				\$93,607.00
700 <u>Property</u>				
752 Capital Equipment – Original and Additional				67,248.00
Total Property				\$67,248.00
Total 2800 Support Services – Central				\$459,132.00

LEA : 122097203 Morrisville Borough SD

Printed 1/14/2019 10:41:34 AM

General Fund (10)

2810 Planning, Research, Development and Evaluation Services	<u>Elementary</u>	<u>Secondary</u>	<u>Federal</u>	<u>Total</u>
100 <u>Personnel Services – Salaries</u>				
100 Personnel Services – Salaries				113,802.00
Total Personnel Services – Salaries				\$113,802.00
200 <u>Personnel Services – Employee Benefits</u>				
220 Social Security Contributions				8,442.00
230 PSERS Retirement Contributions				37,934.00
270 Group Insurance – Self-Insurance				65,368.00
Total Personnel Services – Employee Benefits				\$111,744.00
300 <u>Purchased Professional and Technical Services</u>				
340 Technical Services				10,902.00
Total Purchased Professional and Technical Services				\$10,902.00
600 <u>Supplies</u>				
610 General Supplies				657.00
640 Books and Periodicals				92,950.00
Total Supplies				\$93,607.00
700 <u>Property</u>				
752 Capital Equipment – Original and Additional				67,248.00
Total Property				\$67,248.00
Total 2810 Planning, Research, Development and Evaluation Services				\$397,303.00

LEA : 122097203 Morrisville Borough SD

Printed 1/14/2019 10:41:34 AM

General Fund (10)					
2830 Staff Services		<u>Elementary</u>	<u>Secondary</u>	<u>Federal</u>	<u>Total</u>
100	<u>Personnel Services – Salaries</u>				
100	Personnel Services – Salaries				52,000.00
Total Personnel Services – Salaries					\$52,000.00
200	<u>Personnel Services – Employee Benefits</u>				
220	Social Security Contributions				1,773.00
230	PSERS Retirement Contributions				8,056.00
Total Personnel Services – Employee Benefits					\$9,829.00
Total 2830 Staff Services					\$61,829.00

LEA : 122097203 Morrisville Borough SD

Printed 1/14/2019 10:41:34 AM

General Fund (10)

2833 Staff Accounting Services	<u>Elementary</u>	<u>Secondary</u>	<u>Federal</u>	<u>Total</u>
100 <u>Personnel Services – Salaries</u>				
100 Personnel Services – Salaries				52,000.00
Total Personnel Services – Salaries				\$52,000.00
200 <u>Personnel Services – Employee Benefits</u>				
220 Social Security Contributions				1,773.00
230 PSERS Retirement Contributions				8,056.00
Total Personnel Services – Employee Benefits				\$9,829.00
Total 2833 Staff Accounting Services				\$61,829.00

LEA : 122097203 Morrisville Borough SD

Printed 1/14/2019 10:41:34 AM

General Fund (10)

2900 Other Support Services

Elementary Secondary Federal Total

500 Other Purchased Services

595 IU Payments By Withholding 4,545.00

599 Other Miscellaneous Purchased Services 43,490.00

Total Other Purchased Services				\$48,035.00
Total 2900 Other Support Services				\$48,035.00

LEA : 122097203 Morrisville Borough SD

Printed 1/14/2019 10:41:34 AM

General Fund (10)

2910 Support Services Not Listed Elsewhere In the 2000 Series

Elementary Secondary Federal Total

500 <u>Other Purchased Services</u>				
595 IU Payments By Withholding				4,545.00
599 Other Miscellaneous Purchased Services				43,490.00
Total Other Purchased Services				\$48,035.00
Total 2910 Support Services Not Listed Elsewhere In the 2000 Series				\$48,035.00

LEA : 122097203 Morrisville Borough SD

Printed 1/14/2019 10:41:39 AM

General Fund (10)	
3000 Operation of Non-Instructional Services	<u>Total</u>
100 <u>Personnel Services – Salaries</u>	
100 Personnel Services – Salaries	177,874.00
Total Personnel Services – Salaries	\$177,874.00
200 <u>Personnel Services – Employee Benefits</u>	
220 Social Security Contributions	13,474.00
230 PSERS Retirement Contributions	53,398.00
270 Group Insurance – Self-Insurance	7,832.00
Total Personnel Services – Employee Benefits	\$74,704.00
300 <u>Purchased Professional and Technical Services</u>	
310 Official / Administrative Services	57,483.00
329 Professional Educational Services – Other	54,116.00
390 Other Purchased Professional and Technical Services	269.00
Total Purchased Professional and Technical Services	\$111,868.00
400 <u>Purchased Property Services</u>	
430 Repairs and Maintenance Services	20,208.00
Total Purchased Property Services	\$20,208.00
500 <u>Other Purchased Services</u>	
510 Student Transportation Services	137,832.00
520 Insurance – General	6,674.00
580 Travel	1,381.00
Total Other Purchased Services	\$145,887.00
600 <u>Supplies</u>	
630 Food	49,951.00
Total Supplies	\$49,951.00
800 <u>Other Objects</u>	
810 Dues and Fees	9,835.00
Total Other Objects	\$9,835.00
Total 3000 Operation of Non-Instructional Services	\$590,327.00

LEA : 122097203 Morrisville Borough SD

Printed 1/14/2019 10:41:39 AM

General Fund (10)				
3200 Student Activities	<u>Elementary</u>	<u>Secondary</u>	<u>Federal</u>	<u>Total</u>
100 <u>Personnel Services – Salaries</u>				
100 Personnel Services – Salaries				177,874.00
Total Personnel Services – Salaries				\$177,874.00
200 <u>Personnel Services – Employee Benefits</u>				
220 Social Security Contributions				13,474.00
230 PSERS Retirement Contributions				53,398.00
270 Group Insurance – Self-Insurance				7,832.00
Total Personnel Services – Employee Benefits				\$74,704.00
300 <u>Purchased Professional and Technical Services</u>				
310 Official / Administrative Services				57,333.00
390 Other Purchased Professional and Technical Services				269.00
Total Purchased Professional and Technical Services				\$57,602.00
400 <u>Purchased Property Services</u>				
430 Repairs and Maintenance Services				20,208.00
Total Purchased Property Services				\$20,208.00
500 <u>Other Purchased Services</u>				
510 Student Transportation Services				137,832.00
520 Insurance – General				6,674.00
580 Travel				1,381.00
Total Other Purchased Services				\$145,887.00
600 <u>Supplies</u>				
630 Food				49,951.00
Total Supplies				\$49,951.00
800 <u>Other Objects</u>				
810 Dues and Fees				9,835.00
Total Other Objects				\$9,835.00
Total 3200 Student Activities				\$536,061.00

LEA : 122097203 Morrisville Borough SD

Printed 1/14/2019 10:41:39 AM

General Fund (10)

3300 Community Services

	<u>Elementary</u>	<u>Secondary</u>	<u>Federal</u>	<u>Total</u>
300 <u>Purchased Professional and Technical Services</u>				
310 Official / Administrative Services			150.00	150.00
329 Professional Educational Services – Other				54,116.00
Total Purchased Professional and Technical Services			\$150.00	\$54,266.00
Total 3300 Community Services			\$150.00	\$54,266.00

LEA : 122097203 Morrisville Borough SD

Printed 1/14/2019 10:41:42 AM

General Fund (10)

5000 Other Expenditures and Financing Uses		<u>Total</u>
800 <u>Other Objects</u>		
830 Interest		200,311.00
880 Refunds of Prior Years' Receipts		4,110.00
Total Other Objects		\$204,421.00
900 <u>Other Uses of Funds</u>		
910 Redemption of Principal		638,000.00
920 Authority Obligations		28,690.00
930 Fund Transfers		26,455.00
932 Capital Reserve Fund Transfers Applicable To Fund 32		235,000.00
Total Other Uses of Funds		\$928,145.00
Total 5000 Other Expenditures and Financing Uses		\$1,132,566.00

LEA : 122097203 Morrisville Borough SD

Printed 1/14/2019 10:41:42 AM

General Fund (10)

5100 Debt Service / Other Expenditures and Financing Uses	<u>Elementary</u>	<u>Secondary</u>	<u>Federal</u>	<u>Total</u>
800 <u>Other Objects</u>				
830 Interest				200,311.00
880 Refunds of Prior Years' Receipts				4,110.00
Total Other Objects				\$204,421.00
900 <u>Other Uses of Funds</u>				
910 Redemption of Principal				638,000.00
920 Authority Obligations				28,690.00
Total Other Uses of Funds				\$666,690.00
Total 5100 Debt Service / Other Expenditures and Financing Uses				\$871,111.00

LEA : 122097203 Morrisville Borough SD

Printed 1/14/2019 10:41:42 AM

General Fund (10)

5110 Debt Service

Elementary Secondary Federal Total

800 <u>Other Objects</u>				
830 Interest				200,311.00

Total Other Objects				\$200,311.00
---------------------	--	--	--	--------------

900 Other Uses of Funds

910 Redemption of Principal				638,000.00
920 Authority Obligations				28,690.00

Total Other Uses of Funds				\$666,690.00
---------------------------	--	--	--	--------------

Total 5110 Debt Service				\$867,001.00
-------------------------	--	--	--	--------------

LEA : 122097203 Morrisville Borough SD

Printed 1/14/2019 10:41:42 AM

General Fund (10)

5130 Refund of Prior Year Revenues / Receipts	<u>Elementary</u>	<u>Secondary</u>	<u>Federal</u>	<u>Total</u>
800 <u>Other Objects</u>				
880 Refunds of Prior Years' Receipts				4,110.00
Total Other Objects				\$4,110.00
Total 5130 Refund of Prior Year Revenues / Receipts				\$4,110.00

LEA : 122097203 Morrisville Borough SD

Printed 1/14/2019 10:41:42 AM

General Fund (10)				
5200 Interfund Transfers – Out	<u>Elementary</u>	<u>Secondary</u>	<u>Federal</u>	<u>Total</u>
900 <u>Other Uses of Funds</u>				
930 Fund Transfers				26,455.00
932 Capital Reserve Fund Transfers Applicable To Fund 32				235,000.00
Total Other Uses of Funds				\$261,455.00
Total 5200 Interfund Transfers – Out				\$261,455.00

LEA : 122097203 Morrisville Borough SD

Printed 1/14/2019 10:41:42 AM

General Fund (10)

5230 Capital Projects Fund Transfers	<u>Elementary</u>	<u>Secondary</u>	<u>Federal</u>	<u>Total</u>
900 <u>Other Uses of Funds</u>				
932 Capital Reserve Fund Transfers Applicable To Fund 32				235,000.00
Total Other Uses of Funds				\$235,000.00
Total 5230 Capital Projects Fund Transfers				\$235,000.00

LEA : 122097203 Morrisville Borough SD

Printed 1/14/2019 10:41:42 AM

General Fund (10)

5250 Enterprise Fund Transfers	<u>Elementary</u>	<u>Secondary</u>	<u>Federal</u>	<u>Total</u>
900 <u>Other Uses of Funds</u>				
930 Fund Transfers				26,455.00
Total Other Uses of Funds				\$26,455.00
Total 5250 Enterprise Fund Transfers				\$26,455.00

LEA : 122097203 Morrisville Borough SD

Printed 1/14/2019 10:41:36 AM

Capital Reserve Fund - § 1431 (32)

2000 Support Services		<u>Total</u>
300	<u>Purchased Professional and Technical Services</u>	
330	Other Professional Services	2,900.00
Total Purchased Professional and Technical Services		\$2,900.00
700	<u>Property</u>	
752	Capital Equipment – Original and Additional	461,329.00
Total Property		\$461,329.00
Total 2000 Support Services		\$464,229.00

LEA : 122097203 Morrisville Borough SD

Printed 1/14/2019 10:41:36 AM

Capital Reserve Fund - § 1431 (32)

2300 Support Services – Administration

	<u>Elementary</u>	<u>Secondary</u>	<u>Federal</u>	<u>Total</u>
300 <u>Purchased Professional and Technical Services</u>				
330 Other Professional Services				2,900.00
Total Purchased Professional and Technical Services				\$2,900.00
Total 2300 Support Services – Administration				\$2,900.00

LEA : 122097203 Morrisville Borough SD

Printed 1/14/2019 10:41:36 AM

Capital Reserve Fund - § 1431 (32)

2390 Other Administration Services

300 Purchased Professional and Technical Services

	<u>Elementary</u>	<u>Secondary</u>	<u>Federal</u>	<u>Total</u>
330 Other Professional Services				2,900.00
Total Purchased Professional and Technical Services				\$2,900.00
Total 2390 Other Administration Services				\$2,900.00

LEA : 122097203 Morrisville Borough SD

Printed 1/14/2019 10:41:36 AM

Capital Reserve Fund - § 1431 (32)

2600 Operation and Maintenance of Plant Services

Elementary

Secondary

Federal

Total

700 Property

752 Capital Equipment – Original and Additional

461,329.00

Total Property				\$461,329.00
Total 2600 Operation and Maintenance of Plant Services				\$461,329.00

LEA : 122097203 Morrisville Borough SD

Printed 1/14/2019 10:41:36 AM

Capital Reserve Fund - § 1431 (32)

2660 Safety and Security Services

<u>Elementary</u>	<u>Secondary</u>	<u>Federal</u>	<u>Total</u>
-------------------	------------------	----------------	--------------

700 Property

752 Capital Equipment – Original and Additional			461,329.00
---	--	--	------------

Total Property			\$461,329.00
-----------------------	--	--	---------------------

Total 2660 Safety and Security Services			\$461,329.00
--	--	--	---------------------

LEA : 122097203 Morrisville Borough SD

Printed 1/14/2019 10:41:40 AM

Capital Reserve Fund - § 1431 (32)

4000 Facilities Acquisition, Construction and Improvement Services

Total

300 Purchased Professional and Technical Services

330 Other Professional Services	14,458.00
---------------------------------	-----------

Total Purchased Professional and Technical Services	\$14,458.00
--	--------------------

700 Property

756 Capitalized Technology Hardware and Equipment – Original	155,610.00
--	------------

Total Property	\$155,610.00
-----------------------	---------------------

Total 4000 Facilities Acquisition, Construction and Improvement Services	\$170,068.00
---	---------------------

LEA : 122097203 Morrisville Borough SD

Printed 1/14/2019 10:41:40 AM

Capital Reserve Fund - § 1431 (32)

4400 Architecture and Engineering Services / Educational Specifications – Improvements

Elementary

Secondary

Federal

Total

300 Purchased Professional and Technical Services

330 Other Professional Services

14,458.00

Total Purchased Professional and Technical Services

\$14,458.00

Total 4400 Architecture and Engineering Services / Educational Specifications – Improvements

\$14,458.00

LEA : 122097203 Morrisville Borough SD

Printed 1/14/2019 10:41:40 AM

Capital Reserve Fund - § 1431 (32)

4600 Existing Building Improvement Services

Elementary

Secondary

Federal

Total

700 Property

756 Capitalized Technology Hardware and Equipment – Original

155,610.00

Total Property				\$155,610.00
Total 4600 Existing Building Improvement Services				\$155,610.00

LEA : 122097203 Morrisville Borough SD

Printed 1/14/2019 10:41:38 AM

Other Capital Projects Fund (39)

2000 Support Services		<u>Total</u>
300	<u>Purchased Professional and Technical Services</u>	
330	Other Professional Services	8,000.00
Total Purchased Professional and Technical Services		\$8,000.00
700	<u>Property</u>	
752	Capital Equipment – Original and Additional	135,788.00
Total Property		\$135,788.00
800	<u>Other Objects</u>	
810	Dues and Fees	177,458.00
Total Other Objects		\$177,458.00
Total 2000 Support Services		\$321,246.00

LEA : 122097203 Morrisville Borough SD

Printed 1/14/2019 10:41:38 AM

Other Capital Projects Fund (39)

2300 Support Services – Administration

Elementary

Secondary

Federal

Total

800 Other Objects

810 Dues and Fees

177,458.00

Total Other Objects				\$177,458.00
Total 2300 Support Services – Administration				\$177,458.00

[illegible][illegible][illegible]

177,458.00

\$177,458.00

\$177,458.00

LEA : 122097203 Morrisville Borough SD

Printed 1/14/2019 10:41:38 AM

Other Capital Projects Fund (39)

2600 Operation and Maintenance of Plant Services	<u>Elementary</u>	<u>Secondary</u>	<u>Federal</u>	<u>Total</u>
300 <u>Purchased Professional and Technical Services</u>				
330 Other Professional Services				8,000.00
Total Purchased Professional and Technical Services				\$8,000.00
700 <u>Property</u>				
752 Capital Equipment – Original and Additional				135,788.00
Total Property				\$135,788.00
Total 2600 Operation and Maintenance of Plant Services				\$143,788.00

LEA : 122097203 Morrisville Borough SD

Printed 1/14/2019 10:41:38 AM

Other Capital Projects Fund (39)

2660 Safety and Security Services

<u>Elementary</u>	<u>Secondary</u>	<u>Federal</u>	<u>Total</u>
-------------------	------------------	----------------	--------------

300 Purchased Professional and Technical Services

330 Other Professional Services			8,000.00
---------------------------------	--	--	----------

Total Purchased Professional and Technical Services			\$8,000.00
--	--	--	-------------------

700 Property

752 Capital Equipment – Original and Additional			135,788.00
---	--	--	------------

Total Property			\$135,788.00
-----------------------	--	--	---------------------

Total 2660 Safety and Security Services			\$143,788.00
--	--	--	---------------------

LEA : 122097203 Morrisville Borough SD

Printed 1/14/2019 10:41:41 AM

Other Capital Projects Fund (39)

4000 Facilities Acquisition, Construction and Improvement Services

Total

300 Purchased Professional and Technical Services

330 Other Professional Services	513,752.00
---------------------------------	------------

Total Purchased Professional and Technical Services	\$513,752.00
---	--------------

Total 4000 Facilities Acquisition, Construction and Improvement Services	\$513,752.00
--	--------------

LEA : 122097203 Morrisville Borough SD

Printed 1/14/2019 10:41:41 AM

Other Capital Projects Fund (39)

4400 Architecture and Engineering Services / Educational Specifications – Improvements

Elementary

Secondary

Federal

Total

300 Purchased Professional and Technical Services

330 Other Professional Services

513,752.00

Total Purchased Professional and Technical Services

\$513,752.00

Total 4400 Architecture and Engineering Services / Educational Specifications – Improvements

\$513,752.00

LEA : 122097203 Morrisville Borough SD

Printed 1/14/2019 10:41:43 AM

Other Capital Projects Fund (39)

5000 Other Expenditures and Financing Uses

Total

900 Other Uses of Funds

990 Miscellaneous Other Uses of Funds

44,773.00

Total Other Uses of Funds

\$44,773.00

Total 5000 Other Expenditures and Financing Uses

\$44,773.00

LEA : 122097203 Morrisville Borough SD

Printed 1/14/2019 10:41:43 AM

Other Capital Projects Fund (39)

5100 Debt Service / Other Expenditures and Financing Uses	<u>Elementary</u>	<u>Secondary</u>	<u>Federal</u>	<u>Total</u>
900 <u>Other Uses of Funds</u>				
990 Miscellaneous Other Uses of Funds				44,773.00
Total Other Uses of Funds				\$44,773.00
Total 5100 Debt Service / Other Expenditures and Financing Uses				\$44,773.00

LEA : 122097203 Morrisville Borough SD

Printed 1/14/2019 10:41:43 AM

Other Capital Projects Fund (39)

5150 Bond Discounts

<u>Elementary</u>	<u>Secondary</u>	<u>Federal</u>	<u>Total</u>
-------------------	------------------	----------------	--------------

900 Other Uses of Funds

990 Miscellaneous Other Uses of Funds			44,773.00
---------------------------------------	--	--	-----------

Total Other Uses of Funds			\$44,773.00
----------------------------------	--	--	--------------------

Total 5150 Bond Discounts			\$44,773.00
----------------------------------	--	--	--------------------

LEA : 122097203 Morrisville Borough SD

Printed 1/14/2019 10:41:46 AM

	General Fund(10)	Public Purpose Trust(27)	Other Compt Approved(28)	Athletic / Activity(29)	Capital Reserve (690.1850)(31)
1000 Instruction					
1100 Regular Programs - Elementary / Secondary	7,692,455.00				
1200 Special Programs - Elementary / Secondary	6,392,344.00				
1300 Vocational Education	914,358.00				
1400 Other Instructional Programs - Elementary / Secondary	17,537.00				
1500 Nonpublic School Programs	7,923.00				
1800 Pre-Kindergarten	603,687.00				
Total Instruction	\$15,628,304.00				
2000 Support Services					
2100 Support Services - Students	871,617.00				
2200 Support Services - Instructional Staff	134,388.00				
2300 Support Services - Administration	1,190,688.00				
2400 Support Services - Pupil Health	186,844.00				
2500 Support Services - Business	468,855.00				
2600 Operation and Maintenance of Plant Services	1,465,635.00				
2700 Student Transportation Services	457,169.00				
2800 Support Services - Central	459,132.00				
2900 Other Support Services	48,035.00				
Total Support Services	\$5,282,363.00				
3000 Operation of Non-Instructional Services					
3200 Student Activities	536,061.00				
3300 Community Services	54,266.00				
Total Operation of Non-Instructional Services	\$590,327.00				
4000 Facilities Acquisition, Construction and Improvement Services					
4400 Architecture and Engineering Services / Educational Specifications - Improvements					
4600 Existing Building Improvement Services					
Total Facilities Acquisition, Construction and Improvement Services					
5000 Other Expenditures and Financing Uses					
5100 Debt Service / Other Expenditures and Financing Uses	871,111.00				
5200 Interfund Transfers - Out	261,455.00				
Total Other Expenditures and Financing Uses	\$1,132,566.00				
TOTAL ACTUAL EXPENDITURES & OTHER FINANCING USES	\$22,633,560.00				

LEA : 122097203 Morrisville Borough SD

Printed 1/14/2019 10:41:46 AM

	Capital Reserve (1431)(32)	Other Capital Projects Fund(39)	Debt Service(40)	Permanent(90)	Total
1000 Instruction					
1100 Regular Programs - Elementary / Secondary					7,692,455.00
1200 Special Programs - Elementary / Secondary					6,392,344.00
1300 Vocational Education					914,358.00
1400 Other Instructional Programs - Elementary / Secondary					17,537.00
1500 Nonpublic School Programs					7,923.00
1800 Pre-Kindergarten					603,687.00
Total Instruction					\$15,628,304.00
2000 Support Services					
2100 Support Services - Students					871,617.00
2200 Support Services - Instructional Staff					134,388.00
2300 Support Services - Administration	2,900.00	177,458.00			1,371,046.00
2400 Support Services - Pupil Health					186,844.00
2500 Support Services - Business					468,855.00
2600 Operation and Maintenance of Plant Services	461,329.00	143,788.00			2,070,752.00
2700 Student Transportation Services					457,169.00
2800 Support Services - Central					459,132.00
2900 Other Support Services					48,035.00
Total Support Services	\$464,229.00	\$321,246.00			\$6,067,838.00
3000 Operation of Non-Instructional Services					
3200 Student Activities					536,061.00
3300 Community Services					54,266.00
Total Operation of Non-Instructional Services					\$590,327.00
4000 Facilities Acquisition, Construction and Improvement Services					
4400 Architecture and Engineering Services / Educational Specifications - Improvements	14,458.00	513,752.00			528,210.00
4600 Existing Building Improvement Services	155,610.00				155,610.00
Total Facilities Acquisition, Construction and Improvement Services	\$170,068.00	\$513,752.00			\$683,820.00
5000 Other Expenditures and Financing Uses					
5100 Debt Service / Other Expenditures and Financing Uses		44,773.00			915,884.00
5200 Interfund Transfers - Out					261,455.00
Total Other Expenditures and Financing Uses		\$44,773.00			\$1,177,339.00
TOTAL ACTUAL EXPENDITURES & OTHER FINANCING USES	\$634,297.00	\$879,771.00			\$24,147,628.00

LEA : 122097203 Morrisville Borough SD

Printed 1/14/2019 10:41:50 AM

PSERS Salary Data (Salary Data should relate to the General Fund only)

Amount	Description	Amount
	Total Salary Base for salaries subject to PSERS withholding	8,063,441.00
	Total Federally Funded salaries subject to PSERS withholding	538,054.00

Title I Expenditure Data

Amount	Description	Amount
	Expenditures Funded with Current Title I Funds	180,388.00
	Expenditures Funded with Carry over Title I Funds	
Total Title I Expenditure Data		\$180,388.00

Benefits for Staff Relative to Collective Bargaining Agreements

	OBJECT	COVERED	NOT COVERED	TOTAL
10 General Fund				
	211 Medical Insurance			
	212 Dental Insurance			
	215 Eye Care Insurance			
	216 Prescription Insurance			
	271 Self-Insurance Medical Benefits	1,666,836.00	34,017.00	1,700,853.00
	272 Self-Insurance Dental Benefits			
	275 Self-Insurance Eye Care Benefits			
	276 Self-Insurance Prescription Benefits			
	FUND TOTAL	\$1,666,836.00	\$34,017.00	\$1,700,853.00
50 Enterprise Fund	No Self Insurance data to report			
	211 Medical Insurance			
	212 Dental Insurance			
	215 Eye Care Insurance			
	216 Prescription Insurance			
	271 Self-Insurance Medical Benefits			
	272 Self-Insurance Dental Benefits			
	275 Self-Insurance Eye Care Benefits			
	276 Self-Insurance Prescription Benefits			
	FUND TOTAL			
60 Internal Service Fund				
	211 Medical Insurance			
	212 Dental Insurance			
	215 Eye Care Insurance			
	216 Prescription Insurance			
	271 Self-Insurance Medical Benefits	981,795.00	20,037.00	1,001,832.00
	272 Self-Insurance Dental Benefits			
	275 Self-Insurance Eye Care Benefits			
	276 Self-Insurance Prescription Benefits			
	FUND TOTAL	\$981,795.00	\$20,037.00	\$1,001,832.00
Total of All Funds		\$2,648,631.00	\$54,054.00	\$2,702,685.00

LEA : 122097203 Morrisville Borough SD

Printed 1/14/2019 10:41:52 AM

Function	Special Education (Prior Year)	Nonspecial Education (Prior Year)	Total (Prior Year)	Special Education (Current Year)	Nonspecial Education (Current Year)	Total (Current Year)
2120 Guidance Services	88,032.00	299,859.00	387,891.00	113,039.00	365,116.00	478,155.00
2140 Psychological Services	15,816.00	53,875.00	69,691.00	24,617.00	79,511.00	104,128.00
2150 Speech Pathology and Audiology Services						
2160 Social Work Services						
2260 Instruction and Curriculum Development Services				5,386.00	17,396.00	22,782.00
2350 Legal and Accounting Services	27,101.00	92,314.00	119,415.00	36,080.00	116,538.00	152,618.00
2420 Medical Services	128.00	437.00	565.00	1,067.00	3,448.00	4,515.00
2440 Nursing Services	38,981.00	132,777.00	171,758.00	42,631.00	137,698.00	180,329.00
2700 Student Transportation Services	99,466.00	338,807.00	438,273.00	108,078.00	349,091.00	457,169.00
Total	\$269,524.00	\$918,069.00	\$1,187,593.00	\$330,898.00	\$1,068,798.00	\$1,399,696.00

LEA : 122097203 Morrisville Borough SD

Printed 1/14/2019 10:41:53 AM

	(PRINCIPAL AMOUNTS ONLY)							
<u>GOVERNMENTAL FUNDS/ ACTIVITIES</u>	Short-Term Borrowing	General Obligation Bonds/Notes	Authority Building Obligations	Other Long-Term Debt	Other Post- Employment Benefits (OPEB)	Compensated Absences	Net Pension Liability	Total
1. Debt at Beginning of Fiscal Year		5,131,000.00	111,132.00	97,000.00	435,777.00	311,436.00	26,017,000.00	32,103,345.00
2. Additional Debt Incurred During Year		7,125,000.00		130,000.00	1,134,838.00	2,224.00	1,492,342.00	9,884,404.00
3. Retirements and Repayments		638,000.00	28,690.00	39,400.00	8,973.00			715,063.00
4. Debt at End of Fiscal Year		11,618,000.00	82,442.00	187,600.00	1,561,642.00	313,660.00	27,509,342.00	41,272,686.00
5. Accreted Interest at End Of Fiscal Year								
6. Total Debt and Accreted Interest		11,618,000.00	82,442.00	187,600.00	1,561,642.00	313,660.00	27,509,342.00	41,272,686.00
7. Current Portion P&I - Due within 1 year		1,111,774.00	82,442.00	119,400.00				1,313,616.00
8. Interest Paid during current fiscal year		200,579.00	5,715.00	1.00				206,295.00

(PRINCIPAL AMOUNTS ONLY)							
<u>PROPRIETARY FUNDS</u>							
1. Debt at Beginning of Fiscal Year							
2. Additional Debt Incurred During Year							
3. Retirements and Repayments							
4. Debt at End of Fiscal Year							
5. Accreted Interest at End Of Fiscal Year							
6. Total Debt and Accreted Interest							
7. Current Portion P&I - Due within 1 year							
8. Interest Paid during current fiscal year							

LEA : 122097203 Morrisville Borough SD

Printed 1/14/2019 10:41:53 AM

Total Principal and Interest Payments Made by Your School - All Funds

Function	Fund		Principal (910)	Principal (920)	Interest (830)	Total (Principal +Interest)	Misc Other Uses (990)
5110	10	General Fund	638,000.00	28,690.00	200,311.00	867,001.00	
5110	20	Special Revenue Funds					
5110	30	Capital Projects Funds					
5110	40	Debt Service Fund					
5110	90	Permanent Fund					
5120	10	General Fund					
5120	20	Special Revenue Funds					
5120	30	Capital Projects Funds					
5120	40	Debt Service Fund					
Total Debt Payments - Governmental Funds			\$638,000.00	\$28,690.00	\$200,311.00	\$867,001.00	

Function	Fund		Principal (910)	Principal (920)	Interest (830)	Total (Principal +Interest)
5110	50	Enterprise Fund				
5110	60	Internal Service Fund				
5120	50	Enterprise Fund				
5120	60	Internal Service Fund				
Total Debt Payments - Proprietary Funds						

LEA : 122097203 Morrisville Borough SD

Printed 1/14/2019 10:41:53 AM

Debt Details
Governmental Funds/ Activities

Debt Category	Debt Issue Date (MM/YYYY)	Principal Amounts Only				Current Portion Due Within One Year (Principal and Interest)	Interest Paid During Fiscal Year
		Debt at Beginning of Fiscal Year	Additions	Reductions / Repayments	Debt at End of Fiscal Year		
General Obligation Bonds/Notes – CIB	12/2017		7,125,000.00		7,125,000.00	219,838.00	81,758.00
General Obligation Bonds/Notes – CIB	11/2014	4,300,000.00		445,000.00	3,855,000.00	669,838.00	92,881.00
General Obligation Bonds/Notes – CIB	09/2011	133,000.00		66,000.00	67,000.00	68,062.00	1,324.00
General Obligation Bonds/Notes – CIB	10/2001	698,000.00		127,000.00	571,000.00	154,036.00	24,616.00
Authority Building Obligations – CIB	11/2011	111,132.00		28,690.00	82,442.00	82,442.00	5,715.00
Other Long Term Debt/Liabilities		97,000.00	130,000.00	39,400.00	187,600.00	119,400.00	1.00
Compensated Absences		311,436.00	2,224.00		313,660.00		
Other Post-Employment Benefits (OPEB)		435,777.00	1,134,838.00	8,973.00	1,561,642.00		
Net Pension Liability		26,017,000.00	1,492,342.00		27,509,342.00		
Totals for Debt Entered:		\$32,103,345.00	\$9,884,404.00	\$715,063.00	\$41,272,686.00	\$1,313,616.00	\$206,295.00

LEA : 122097203 Morrisville Borough SD

Printed 1/14/2019 10:41:54 AM

General Fund (10)

Section 1: Tuition/Purchased Services as Reported within Expenditure Detail	Amount
Tuition Reported in General Fund Expenditures 1000-560	2,988,993.00
Purchased Services in General Fund Expenditures 1000-594 and 1000-597	
Section 1 Total	\$2,988,993.00

Section 2: Tuition Paid to Institution Types During Fiscal Year	Tuition Paid For Nonspecial Education	Tuition Paid For Special Education	Total
1 1306 Institutions			
2 Institutionalized Children's Programs			
3 Juveniles Incarcerated in Adult Facilities			
4 Residential Treatment Facilities			
5 Other Local Education Agencies		875,079.00	875,079.00
6 Brick and Mortar Charter Schools	231,876.00	247,001.00	478,877.00
7 Cyber Charter Schools	354,053.00	175,248.00	529,301.00
8 Career and Technology Centers	743,006.00		743,006.00
9 Approved Private Schools		229,956.00	229,956.00
10 PA Chartered Schools for the Deaf and Blind		124,884.00	124,884.00
11 Private Residential Rehabilitative Institutions			
12 Juvenile Detention Centers	7,890.00		7,890.00
13 Special Program Jointures			
14 Other Tuition Not Included Elsewhere In This Section			
Section 2 Total	\$1,336,825.00	\$1,652,168.00	\$2,988,993.00

LEA : 122097203 Morrisville Borough SD

Printed 1/14/2019 10:41:57 AM

Food Service / Cafeteria Operations Fund (51)

3000 Operation of Non-Instructional Services		<u>Total</u>
100 <u>Personnel Services – Salaries</u>		
100 Personnel Services – Salaries		182,981.00
Total Personnel Services – Salaries		\$182,981.00
200 <u>Personnel Services – Employee Benefits</u>		
210 Group Insurance – Contracted Provider		31,868.00
220 Social Security Contributions		25,960.00
Total Personnel Services – Employee Benefits		\$57,828.00
500 <u>Other Purchased Services</u>		
520 Insurance – General		36,684.00
Total Other Purchased Services		\$36,684.00
600 <u>Supplies</u>		
610 General Supplies		15,007.00
630 Food		187,039.00
Total Supplies		\$202,046.00
700 <u>Property</u>		
740 Depreciation		2,341.00
Total Property		\$2,341.00
800 <u>Other Objects</u>		
810 Dues and Fees		302.00
Total Other Objects		\$302.00
Total 3000 Operation of Non-Instructional Services		\$482,182.00

LEA : 122097203 Morrisville Borough SD

Printed 1/14/2019 10:41:57 AM

Food Service / Cafeteria Operations Fund (51)

3100 Food Services	<u>Elementary</u>	<u>Secondary</u>	<u>Federal</u>	<u>Total</u>
100 <u>Personnel Services – Salaries</u>				
100 Personnel Services – Salaries				182,981.00
Total Personnel Services – Salaries				\$182,981.00
200 <u>Personnel Services – Employee Benefits</u>				
210 Group Insurance – Contracted Provider				31,868.00
220 Social Security Contributions				25,960.00
Total Personnel Services – Employee Benefits				\$57,828.00
500 <u>Other Purchased Services</u>				
520 Insurance – General				36,684.00
Total Other Purchased Services				\$36,684.00
600 <u>Supplies</u>				
610 General Supplies				15,007.00
630 Food				187,039.00
Total Supplies				\$202,046.00
700 <u>Property</u>				
740 Depreciation				2,341.00
Total Property				\$2,341.00
800 <u>Other Objects</u>				
810 Dues and Fees				302.00
Total Other Objects				\$302.00
Total 3100 Food Services				\$482,182.00

LEA : 122097203 Morrisville Borough SD

Printed 1/14/2019 10:41:56 AM

Internal Service Fund (60)

2000 Support Services

Total

200 <u>Personnel Services – Employee Benefits</u>	
270 Group Insurance – Self-Insurance	1,001,832.00
Total Personnel Services – Employee Benefits	\$1,001,832.00
Total 2000 Support Services	\$1,001,832.00

LEA : 122097203 Morrisville Borough SD

Printed 1/14/2019 10:41:56 AM

Internal Service Fund (60)

2300 Support Services – Administration	<u>Elementary</u>	<u>Secondary</u>	<u>Federal</u>	<u>Total</u>
200 <u>Personnel Services – Employee Benefits</u>				
270 Group Insurance – Self-Insurance				1,001,832.00
Total Personnel Services – Employee Benefits				\$1,001,832.00
Total 2300 Support Services – Administration				\$1,001,832.00

LEA : 122097203 Morrisville Borough SD

Printed 1/14/2019 10:41:56 AM

Internal Service Fund (60)

2390 Other Administration Services

	<u>Elementary</u>	<u>Secondary</u>	<u>Federal</u>	<u>Total</u>
200 <u>Personnel Services – Employee Benefits</u>				
270 Group Insurance – Self-Insurance				1,001,832.00
Total Personnel Services – Employee Benefits				\$1,001,832.00
Total 2390 Other Administration Services				\$1,001,832.00

	<u>Food Service(51)</u>	<u>Child Care Operations(52)</u>	<u>Other Enterprise(58)</u>	<u>Internal Service(60)</u>	<u>Total</u>
2000 <u>Support Services</u>					
2300 Support Services - Administration				1,001,832.00	1,001,832.00
Total Support Services				\$1,001,832.00	\$1,001,832.00
3000 <u>Operation of Non-Instructional Services</u>					
3100 Food Services	482,182.00				482,182.00
Total Operation of Non-Instructional Services	\$482,182.00				\$482,182.00
TOTAL ACTUAL EXPENDITURES & OTHER FINANCING USES	\$482,182.00			\$1,001,832.00	\$1,484,014.00